

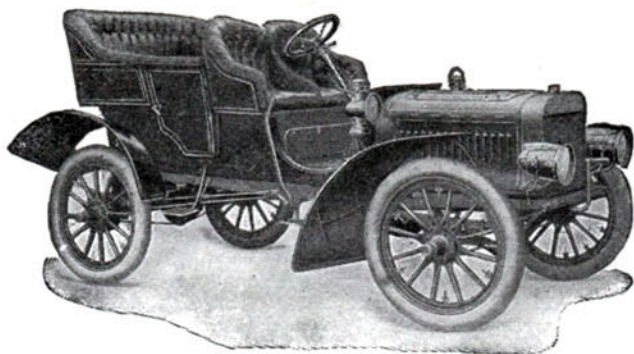


The Stars of the Show

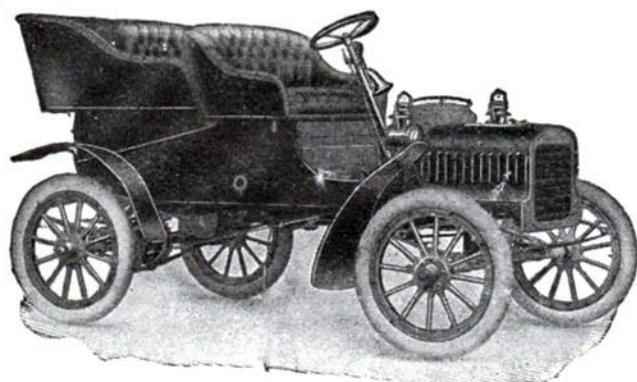
Again the *Ford Cars* held the "center of the stage" at the New York show. Experienced motorists were enthusiastic in praise of Henry Ford's advanced ideas and the universal query "what has Ford this year" emphasized the fact that the Automobile world looks to Henry Ford for the ultimate perfection of motor driven vehicles.

For 1905 we have the FORD MODEL "B" with a four-cylinder (vertical) engine, extra long wheel base, side entrance tonneau, direct drive, and an absolutely new and original idea in driving construction. Weight is 1700 lbs., and as the engine develops more than 20 H. P., it gives the car more power for its weight than any Automobile of similar type.

The Ford driving frame is such an evident advance in construction that everyone interested ought to have our new catalogue describing this wonderful Ford invention. Price of Model "B" \$2000.



FORD MODEL B, PRICE \$2000



FORD MODEL C, PRICE \$950

The FORD MODEL "C" has a 10 H. P., double opposed motor with the successful Ford planetary transmission, a lengthened wheel base and perfect distribution of weight, making it the most practical car on the market for business or professional men or for ordinary family use. The price of Model "C" is \$950, with detachable tonneau, so the car can be used as a runabout if desired.

Economy of maintenance, always a feature of the Ford cars, is further guaranteed in the 1905 Models, by light, strong construction and mechanical simplicity and excellence.

Catalogue sent on request.

Ford Motor Co., Detroit, Mich.

Canadian Trade supplied by Ford Motor Co. of Canada, Ltd., Walkerville, Ont.