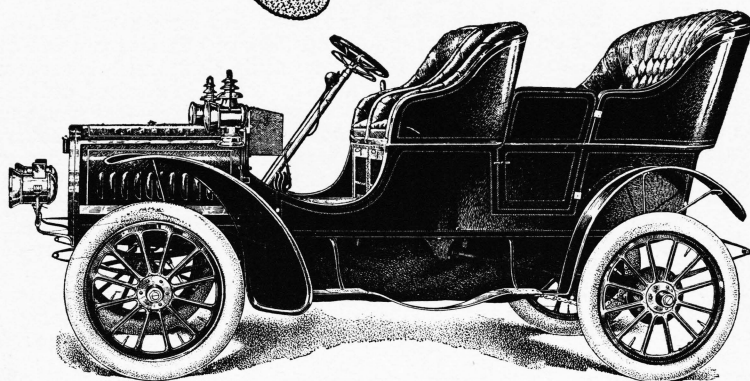


Rambler



SURREY, TYPE ONE
18 horse power, \$1350

This carriage is a demonstrated, not merely a theoretical success. ¶ Five months use on the Pacific Coast shows that its upkeep is small, and that like all other Ramblers, it is to be depended upon wherever roads are fit for travel. ¶ Full information on request. ¶ Other Models \$750, \$850, \$2000 and \$3000. ¶ *Immediate delivery.*

THOMAS B. JEFFERY & COMPANY

Main Office and Factory, Kenosha, Wisconsin
Branches, Boston, Chicago, Philadelphia
New York Agency, 134 West Thirty-eighth Street
Representatives in all other leading cities