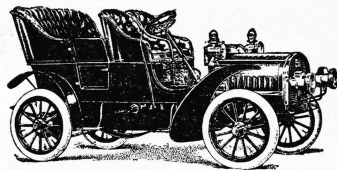


# Rambler

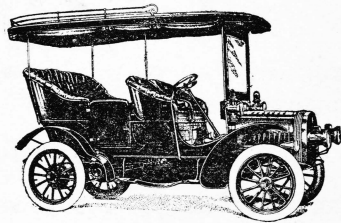
**T**he success of our latest models is due to the improvement of the very types that gave satisfaction in previous seasons. A purchaser gets known values. Operation is by one lever, pedals, and a throttle attached to the steering wheel. The hand that steers is the hand that controls. Ignition is automatic. The long, strong pressed-steel frame, the rigid cross members supporting the engine, the perfectly balanced reciprocating parts, the full elliptic springs and large tires reduce vibration to a minimum.

*Main Office and Factory,  
Kenosha, Wisconsin.  
Branches, Boston, Chicago, Philadelphia,  
New York Agency, 134  
West Thirty-eighth Street. Representatives  
in all leading cities.*

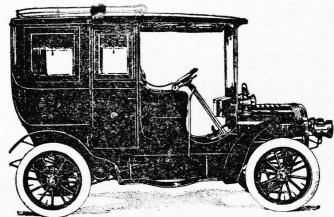
**THOMAS B. JEFFERY  
& COMPANY**



\$ 1350



\$ 2000



\$ 3000