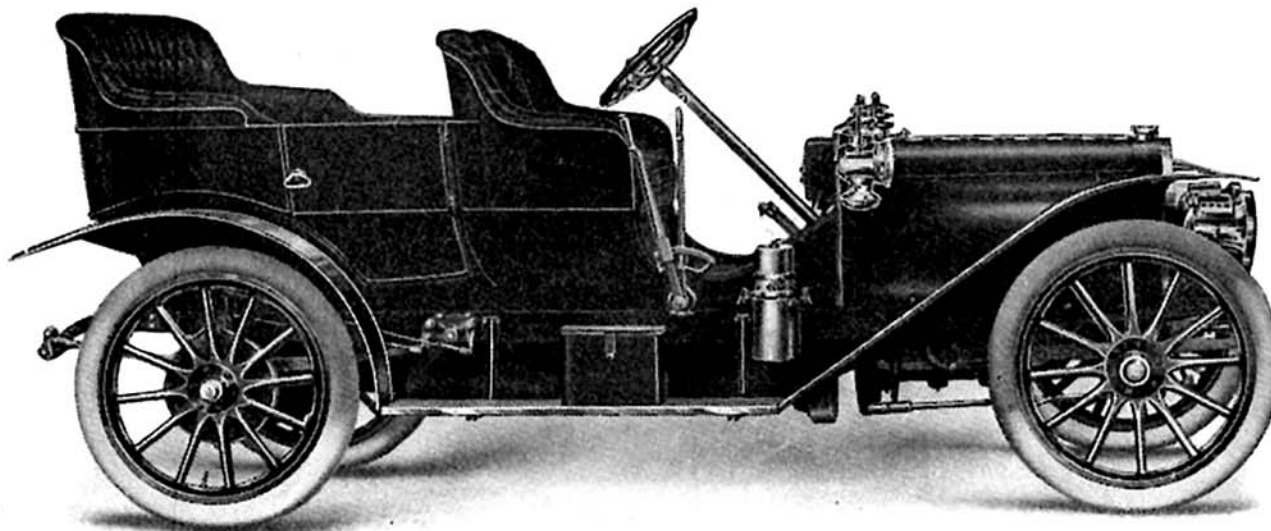


Rambler

Automobiles



For the year 1908 the entire facilities of the Rambler factory will be devoted to the production of two Models, 34 and 31.

Model 34, a five-passenger touring car with four-cylinder vertical motor, 32 horse-power, has selective type transmission with shaft drive. The wheel base is 112 in., wheels 36 in., with 4 in. tires. Price, fully equipped, \$2,250. The same chassis, however, with appropriate changes in detail, will be equipped with a roadster body with rumble seat, at the same price.

Model 31 is a five-passenger touring car with detachable tonneau, equipped with the Rambler unit power plant, comprising double opposed motor, multiple disk clutch and planetary transmission entirely enclosed. Price, fully equipped, \$1,400. This model can be furnished with torpedo deck in lieu of the tonneau, at \$1,300.

Both models have been brought to the highest possible degree of perfection in every detail that insures

Service, Economy and Comfort

A complete line of 1908 Ramblers will be shown at a private exhibit at the salesrooms of the Homan & Schulz Company, 38-40 West 62d Street, New York City, during both New York Automobile shows.

You cannot afford to miss making a critical inspection of these 1908 models of

The Car of Steady Service.

Advance catalog now ready; write for a copy to-day

Thomas B. Jeffery & Company
Main Office and Factory, Kenosha, Wis.

Branches and Distributing Agencies: Chicago, Milwaukee, Boston, Philadelphia, San Francisco
Representatives in all leading cities