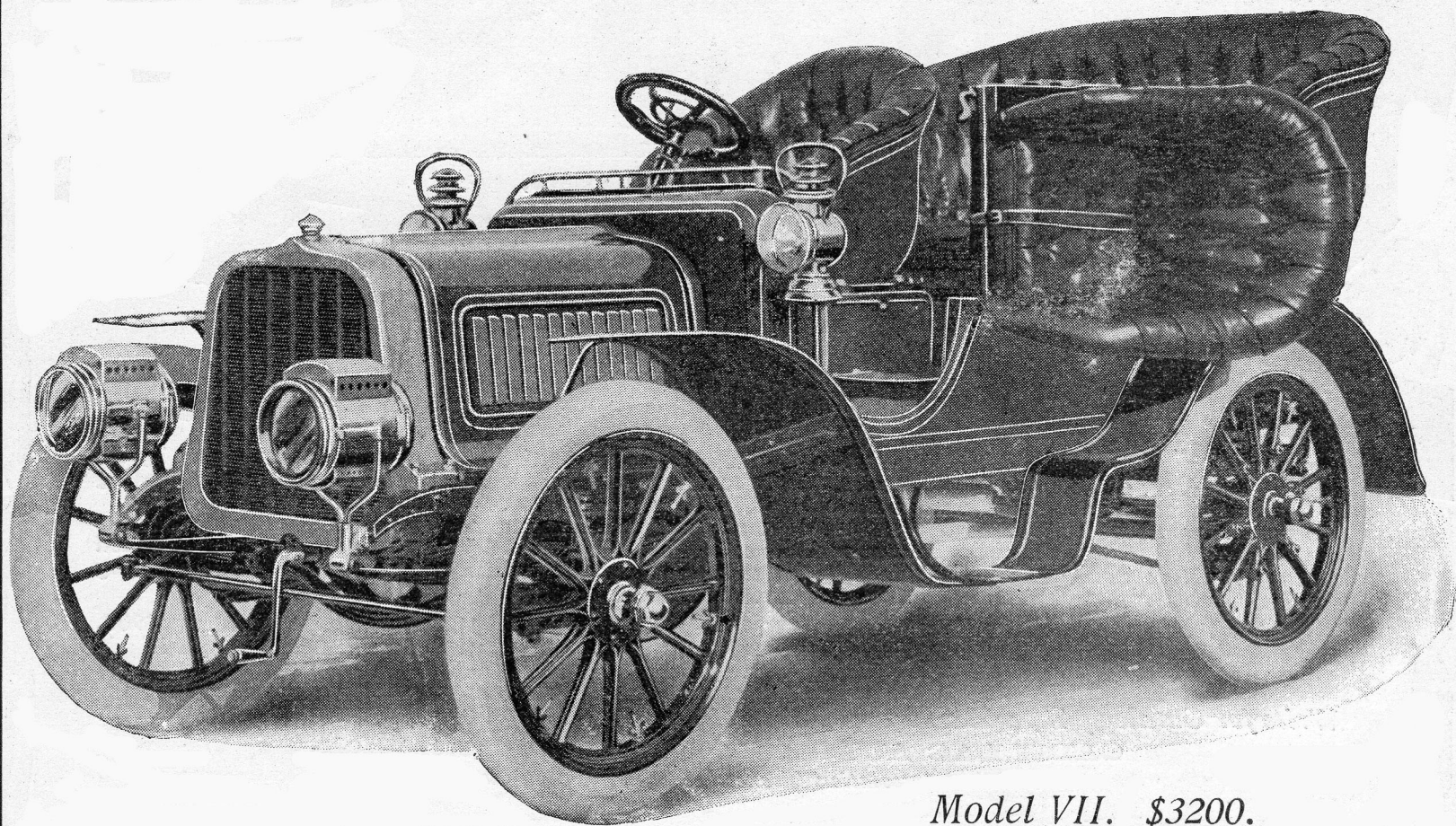


POPE-TOLEDO SUPREMACY



Model VII. \$3200.

WHY have Pope-Toledo stock cars won in so many speed and endurance contests?
BECAUSE they are regularly equipped with powerful, easy-running engines.
IS IT TRUE that they vanquished in the Vanderbilt Cup Race cars of many times
 their horse power?

YES, and that is on account of the skillful construction and assembling of all mechanical
 parts, and because the wonderful power of the four-cylinder, four-cycle engines is
 conveyed by **direct chain drive** to the wheels, thus avoiding waste of power.

The point of interest to the purchaser is not the horse power of the
 engine, but the efficient power delivered at the wheels. Idle gears in mesh
 or any mechanical part, intervening between the engine and the point at
 which the power is delivered, lessens the power.

By over a quarter of a century's experience in making and marketing
 mechanical vehicles, the subject of transmission has been mastered. Our
 patrons get the benefit of this experience.

DON'T EXPERIMENT.

Model VII.	New design, 30 H.P., front entrance, tested to a mile in one minute flat. <i>Prompt deliveries.</i>	\$3200
Model VIII.	Double side entrance, 30 H.P., seats two in front, three in tonneau thoroughly up-to-date; price, fully equipped, <i>Extension Cape Cart, Victoria or Canopy Top, \$250.</i>	\$3500
Model IX.	Double side entrance, 45 H.P., a fine, modern, high-powered car, <i>Extras same as Model VIII., \$250.</i>	\$6000
Model X.	New 20 H.P., side entrance car; a gem and leader of its class, <i>Built on the lines of our best cars.</i>	\$2800

Pope Motor Car Co., Desk D, Toledo, O.

Members Association Licensed Automobile Manufacturers.