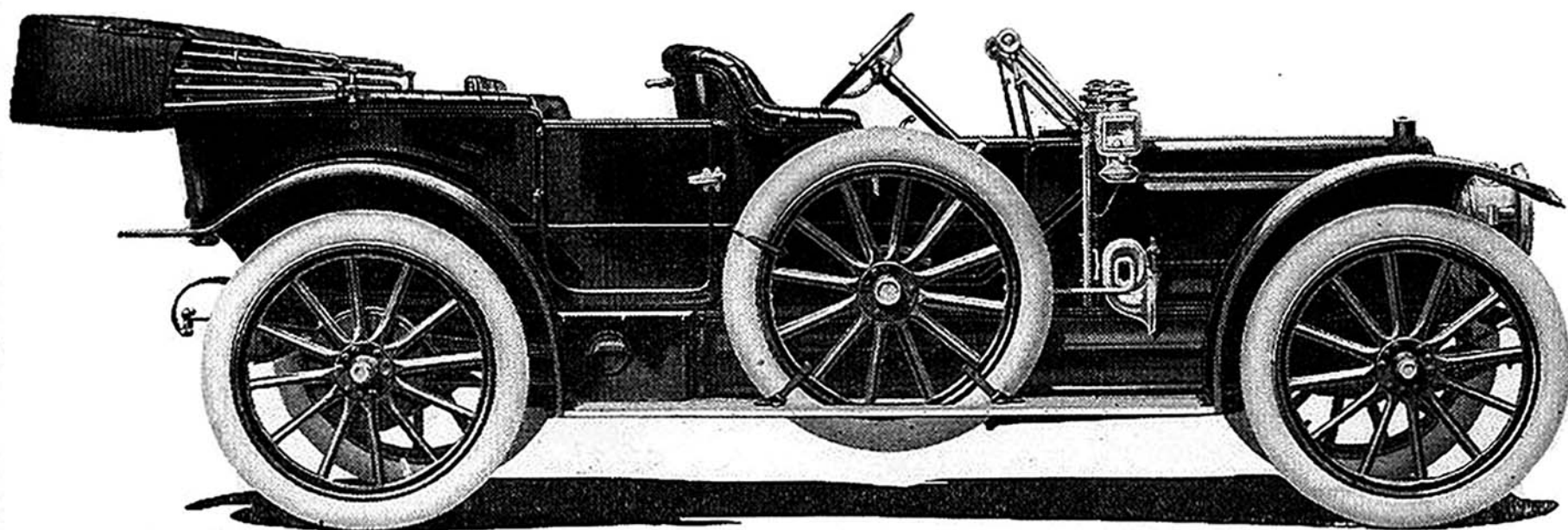


Rambler

Limited Output 1911



Rambler
Sixty-five

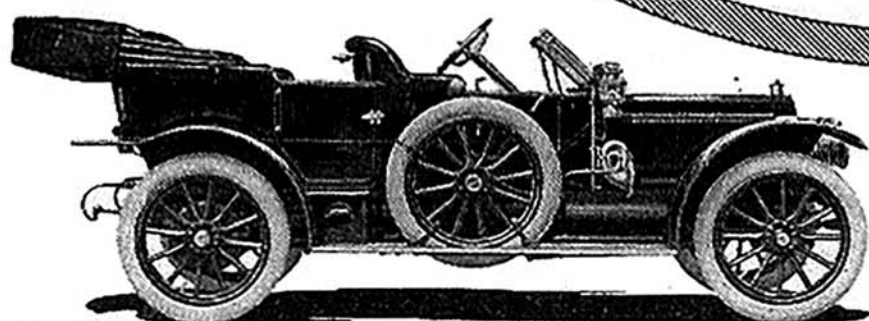
THE Rambler line for 1911 is complete, including landaulets, coupes, limousines, town cars, roadsters, toy tonneaus and five and seven-passenger touring cars with detachable fore doors. Details and construction alike for all; two sizes, forty-five and thirty-four horsepower. Forty-inch wheels on all seven-passenger open cars; thirty-six-inch on all others. Every detail is refined, producing gratifying comfort and silence. Standard equipment with every model: Spare wheel and tire, shock absorbers, top and envelope, wind shield, five lamps, gas tank and tools. Ninety-two per cent of all Rambler parts are made in the Rambler factory. Years of experience in cultivating painstaking habits of workmanship have created a standard of quality such that to actually make so many of the parts, even in a factory as large and completely equipped as the Rambler, the output must be limited.

Prices, \$2,175 to \$4,140
Early deliveries. Complete information and catalog on request

The Thomas B. Jeffery Company

Main Office and Factory, Kenosha, Wisconsin
Branches: Boston, Chicago, Milwaukee, Cleveland, San Francisco
New York Dealers: The Rambler Automobile Co.
of New York, 38-40 West 62nd Street, New York

Rambler
Sixty-four



Rambler
Sixty-three

