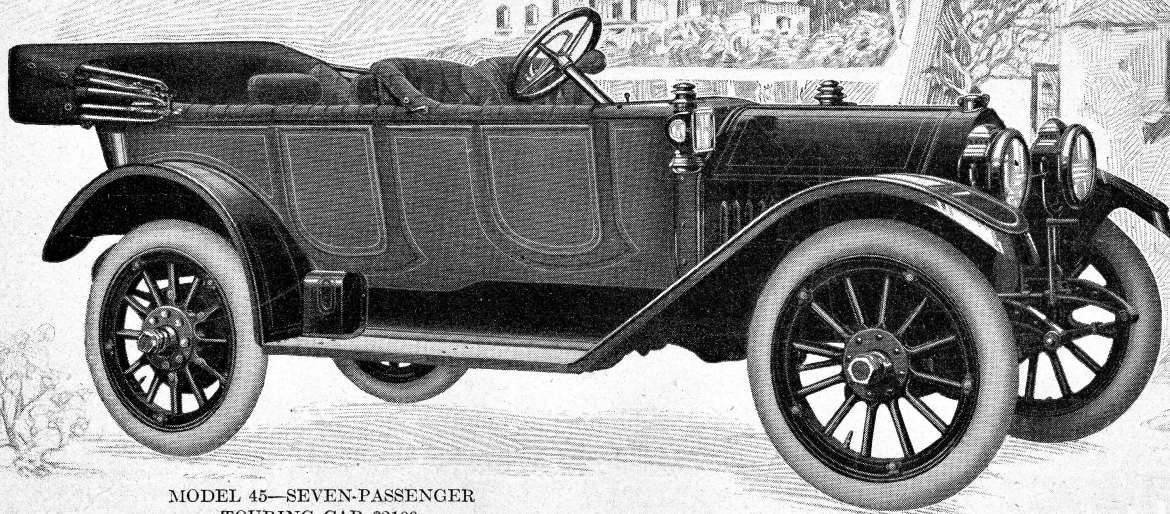


Oakland

The Car with a Conscience



MODEL 45—SEVEN-PASSENGER
TOURING CAR \$2100

Beauty Is Self-Evident Here

Here is a dashing car! A car of beauty, strength and power. It has created a new standard in motor car values. By comparison, higher-priced cars are found wanting and those of equal cost measure far below the pace set by this model.

Look at it closely. Notice the individual design—the harmonious body lines—the graceful sweep—the roomy tonneau—the inside drive—the exclusiveness of the upholstery, and the other refined details.

This car represents more than mere beauty, too—more than smart body lines and handsome equipment. It represents a sound mechanical standard and the highest development of simplicity, reliability and accessibility. Please **confirm** these common claims. Everybody uses them, we know, but they are given a different meaning in Oakland construction.

There are other Oakland models, each as distinctive and beautiful as the car pictured above, ranging in price from \$1,200 to \$2,250.

The Model "45" comes also with a close coupled tourabout body, seating four passengers and selling at \$2,250.

The Model "40" is a powerful car, with a $4\frac{1}{8} \times 4\frac{3}{4}$ -inch motor, unit power plant, 112-inch wheel base, Schebler carburetor and Remy magneto, dual system, and is furnished as a 5-passenger touring car, \$1,450; a 3-passenger coupe, \$1,900, or "Sociable" roadster, seating three passengers in one seat, \$1,450.

The Model "30," which is built as a 5-passenger touring car, \$1,250, or as a light runabout, \$1,200, has a 4 x 4-inch motor, 106-inch wheel base, Schebler carburetor and Remy magneto.

Oakland Cars will be equipped with Self-Starters, complete, for \$25 extra

Established dealers are invited to make early application for available territory

O a k l a n d M o t o r C a r C o m p a n y

150 Oakland Avenue, Pontiac, Mich.

NEW YORK CITY—1600 Broadway
ATLANTA, GA.—141 Peachtree St.

FACTORY BRANCHES —
BOSTON, MASS.—591 Boylston St.
KANSAS CITY, MO.—1316-18 Grand Ave.

INDIANAPOLIS, IND.—325 North Pennsylvania St.
SAN FRANCISCO, CALIF.—542 Van Ness Ave.

Write for Catalogue