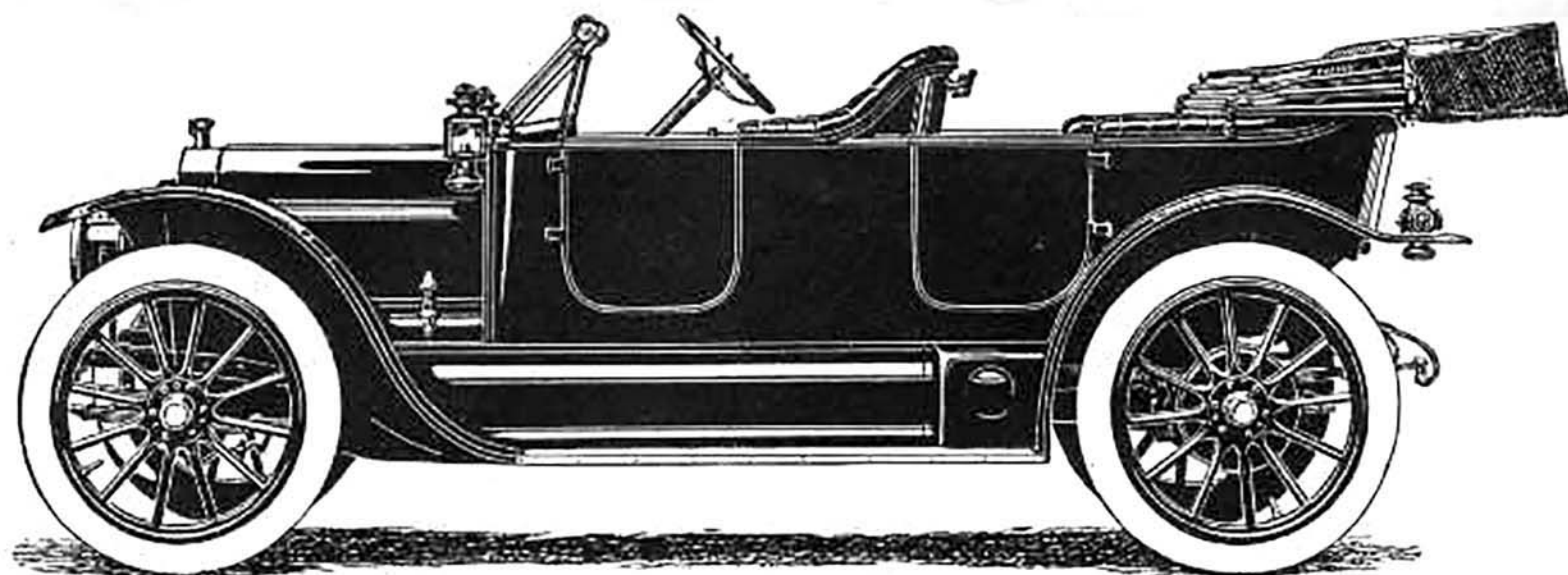


# The Rambler Cross Country Has Made Good



*The Rambler Cross Country—\$1650*

## We Guarantee Every Rambler for Ten Thousand Miles

*Subject to the conditions of our signed guarantee which we will give with each car*

Ten thousand miles! Think what it means!

Step into the Rambler in New York and journey across four states to Chicago. Take your bearings and strike due west across seven states to the Golden Gate.

Run down the Coast to Los Angeles. Turn back over the mountains and on through eight hundred miles of desert to El Paso. Then on to New Orleans and back, by way of Atlanta, through eight states to the city of New York.

Strike out again cross country for Chicago. Then drive your car straightway across the American continent to San Francisco. Yet you

have not exhausted the ten thousand mile Rambler guarantee backed by a company of known stability.

We give this guarantee to prove to you our unbounded confidence in every single part that goes into every Rambler car.

The first Rambler Cross Country that left the factory made a three thousand mile test trip through nine states, over the mountains of Pennsylvania to New York, Albany, Boston and back to the factory.

Since then the fame of the Cross Country has spread, and its service has extended to every state in the Union, to every province of Canada, to Mexico, to Australia, South America, Europe and the Orient.

Everywhere this Rambler has gone its performance has strengthened our confidence in its ability to fulfill this guarantee. That is why we do not hesitate to give it.

Eleven years of success in motor car building has so established the stability of this company in manufacturing and financial resources as to make definitely known the responsibility back of this guarantee.

Such a car with this guarantee, backed by such a company whose liberal policy is so widely known, are the reasons why you should have a Rambler. A postal card will bring you a catalog at once.

**Equipment** —Bosch duplex ignition. Fine large, black and nickel headlights with gas tank. Black and nickel side and tail oil lamps; large tool box; tool roll with complete tool outfit. Roomy, folding robe rail; foot rest, jack, pump and tire kit. Top with envelope, \$80—wind shield, \$35—demountable wheel, less tire, with brackets and tools, \$30—gas operated self-starter, \$50.

**The Thomas B. Jeffery Company**  
Main Office and Factory, Kenosha, Wisconsin  
Branches: Boston, Chicago, Cleveland, Milwaukee, New York,  
Philadelphia, Sacramento, San Francisco