

Speedwell



Figures that point significantly to the remarkable quality in Speedwell Cars

The following records of Speedwell Cars in service—covering the mileage stated—were picked at random from testimonial letters received.

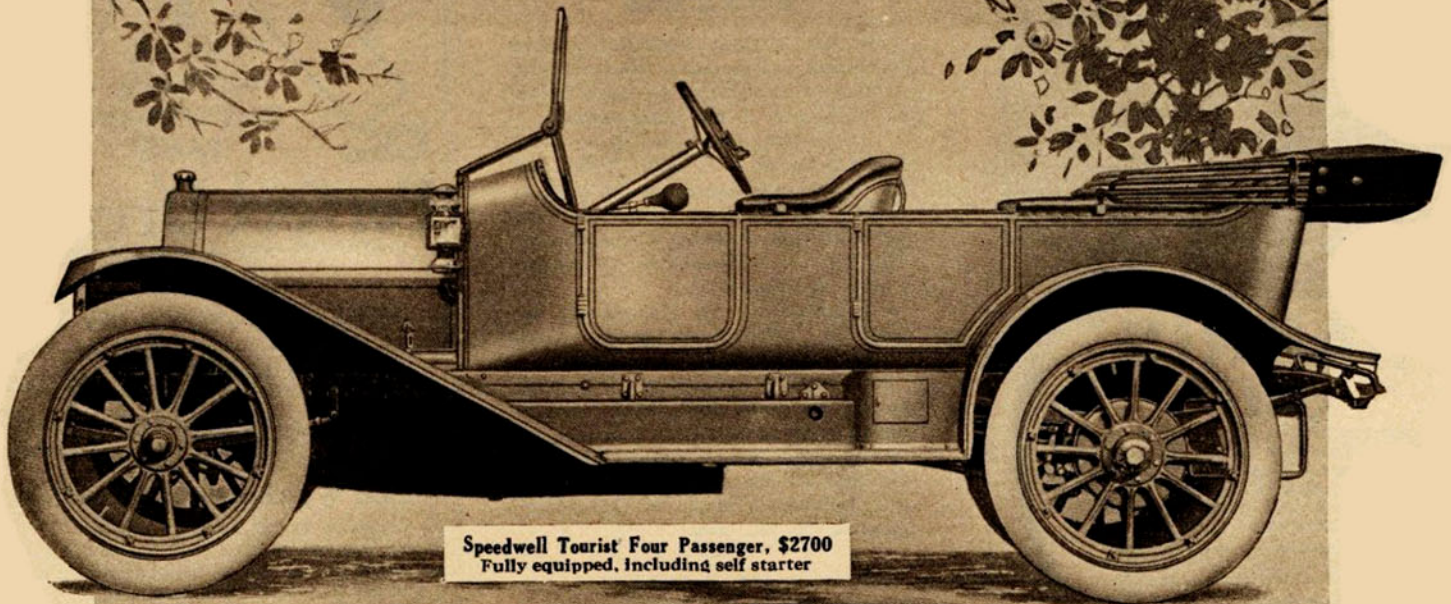
- | | | |
|---------------------|---|---|
| 30,000 Miles | <i>"Nothing of importance has ever broken. Paint and a new top will make a new machine of it."</i> From Kansas City Speedwell Owner. | *Standard Equipment: Self-starter, Full cape top and boot, Glass front, Demountable rims, Gas tank and full lamp equipment, Tool kit, Tire kit, Etc., etc. One standard chassis— 4 cylinder, 50 H.P. 123 inch wheelbase. 36 inch wheels. <small>*Equipment as given applies to all models except roadsters and limousine, which vary slightly in their standard equipment.</small> |
| 13,000 Miles | <i>"Engine bearings and gears absolutely unmarked by use."</i> From Seattle Speedwell Owner. | |
| 23,000 Miles | <i>"Practically no expense except for tires, gasoline and oil."</i> From a Tacoma Speedwell Owner. | |
| 61,000 Miles | <i>"This is my fourth year—and with a very small outlay I expect to have it as good as new."</i> From a Glen Cove (N. Y.) Speedwell Owner. | |

Stop and consider these figures before you buy a car.

And think, too, what you get in a Speedwell—a magnificent big car, comfortable, fine appearing, with almost unlimited power. A car that is ready to stand years of service—the greatest value in the motoring world today.

LITERATURE UPON REQUEST

THE SPEEDWELL MOTOR CAR COMPANY, 390 Essex Avenue, DAYTON, OHIO



Speedwell Tourist Four Passenger, \$2700
Fully equipped, including self starter