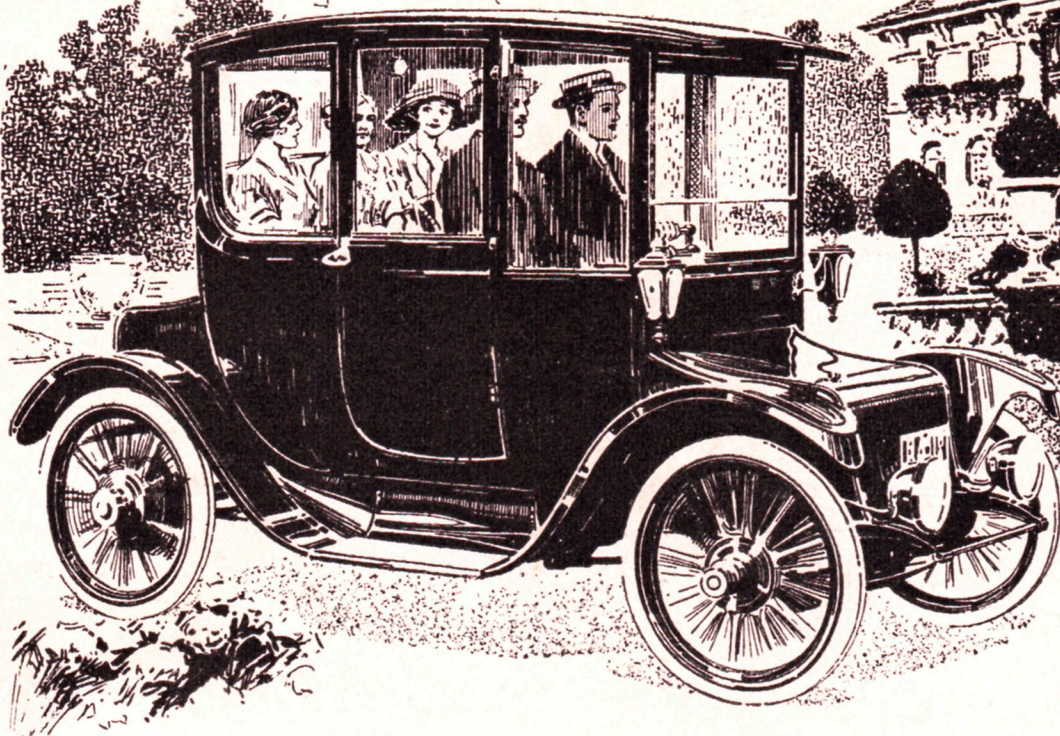


The Borland Electric



**5-Passenger
Coupe
\$2900**

THIS roomy, comfortable Borland Coupe gives utmost satisfaction for general service. Whenever and wherever used—for business trip; social call; theatre party; shopping expedition or pleasure jaunt, it meets every need, perfectly, the year around.

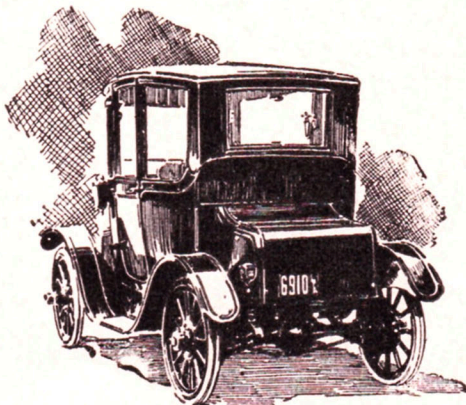
Built durably along pleasing lines; maximum mileage at lowest operating cost ensured by accurately balanced,

easy running mechanism; spacious, with comfortable seats for five—all facing forward; simple, easy control from either front or rear seat; luxurious appointments; richly upholstered in tasteful, imported fabrics. A car you will be proud to own.

Horizontal control; six forward speeds and three reverse. Automatic cut-out disconnects power when emergency brake is applied. "Exide" batteries, standard equipment. \$2900.

The Borland Electric Roadster—a rakish, speedy, trim-looking three passenger car, with open body and wheel steer, is ideal for business or professional man. \$2550.

Send for the new Borland Poster Book illustrating and describing the Borland Electric Models



Rear View of Coupe—note its harmonious lines

The Borland-Grannis Co.
312 East Huron Street
Chicago, Ill.

B

B