

Six-Passenger "32"

\$1175 F. O. B. Detroit, has equipment of two folding and revolving occasional seats in rear; foot rest; windshield, mobile top with envelope, jiffy curtains, quick detachable rims, rear shock absorber, gas headlights, Prest-O-Lite tank, oil lamp, tools and horn. Four cylinders, 31 1/2-inch bore and 5 1/2-inch stroke; 126-inch wheelbase; 33 x 4-inch tires. Standard color, black. Trimmings, black and nickel.

"32" Touring Car, fully equipped, \$975 F. O. B. Detroit

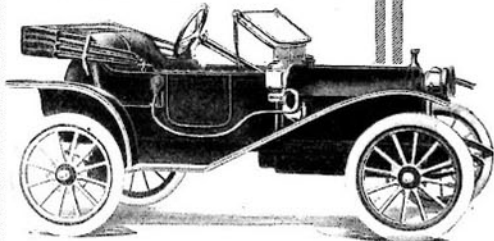
"32" Roadster, fully equipped, \$975 F. O. B. Detroit



The "32" Coupé

**A distinguished addition
to a distinguished line.**

First View, New York Motor Show, January 11-18



"20" Runabout, Fully Equipped

\$750 F. O. B. Detroit. Four cylinders, 50 H. P., sliding gears, Bosch magneto, top, windshield, gas lamps and generator, oil lamp, tools and horn.

In exterior appearance, the Hupmobile Coupé is as unobtrusively unique and as well-balanced as the other models of the "32" type.

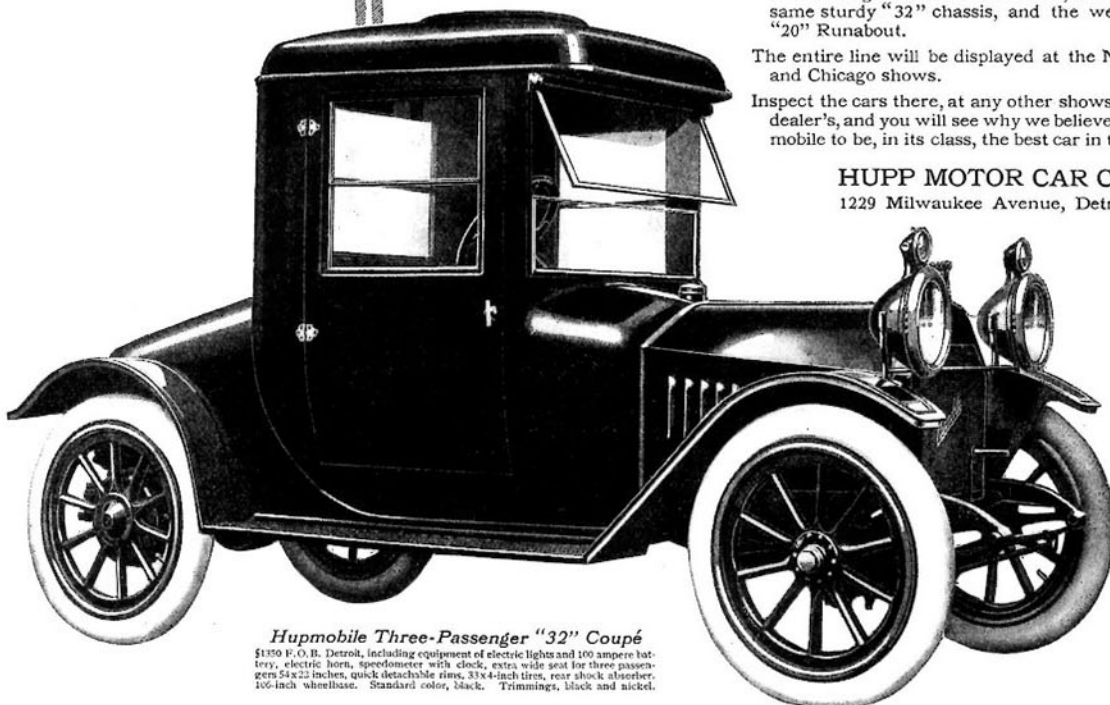
In interior finish and appointment it is rich and luxurious—imported Bedford Cord upholstery, with side walls to match and ceiling done in heavy satin; with right-hand control and room for three adults in comfort.

The coupé rounds out the line of Hupmobile pleasure cars which now include two touring models and a roadster, all built on the same sturdy "32" chassis, and the well-known "20" Runabout.

The entire line will be displayed at the New York and Chicago shows.

Inspect the cars there, at any other shows or at the dealer's, and you will see why we believe the Hupmobile to be, in its class, the best car in the world.

HUPP MOTOR CAR COMPANY
1229 Milwaukee Avenue, Detroit, Michigan



Hupmobile Three-Passenger "32" Coupé

\$1370 F. O. B. Detroit, including equipment of electric lights and 100 ampere battery, electric horn, speedometer with clock, extra wide seat for three passengers 54 x 22 inches, quick detachable rims, 33 x 4-inch tires, rear shock absorber, 106-inch wheelbase. Standard color, black. Trimmings, black and nickel.