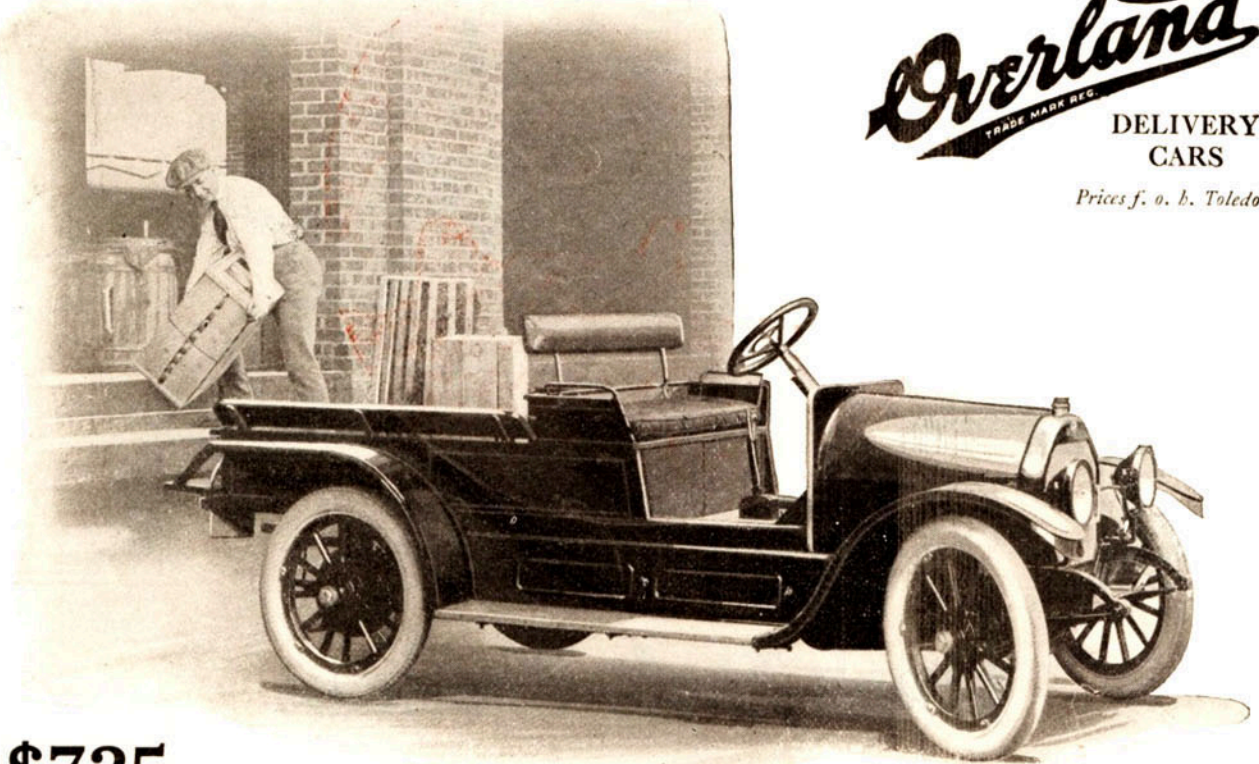


Overland

TRADE MARK REG.

DELIVERY CARS

Prices f. o. b. Toledo



\$725

Open Express
Delivery Car

A Substantial Delivery Car at a Low Price

\$750

Panel Body
Delivery Car

THIS announces the new Overland Delivery Car—now ready for immediate shipment.

Unusually low in first cost, and inexpensively maintained, this sturdy vehicle will soon *pay for itself in quick deliveries.*

In it you get full benefit of the saving in price made possible only by the extensive manufacturing facilities of the great Overland plant.

The Overland Delivery Car is faster than a horse or team. It is far more reliable. It is much cheaper in proportion to the work done. It gives you the quick action you need in your business.

The 35 horsepower motor has a big surplus of power over anything you will ever require.



35 horsepower motor
High tension magneto
ignition
5-bearing crankshaft
Thermo-syphon
cooling
Underslung rear
springs

33" x 4" tires; non-
skids in rear
Demountable rims
Electric starting and
lighting system
Large, powerful brakes
Rain-vision, ventilat-
ing windshield

Instrument board on
cowl dash
Left-hand drive
Center control
Electric switches on
steering column
Magnetic speedometer

“Made
in
U. S. A.”

You can depend on it absolutely at all times — under all conditions.

The Overland Delivery Car is electrically lighted and started. It has high tension magneto ignition, revolving oil indicator, electric control switches on the steering column, large tires, and many other advantages found on no other delivery car at this low price.

In every respect it maintains the high standard for which Overland has always stood. It is a substantial, money-making investment for any business man who maintains a delivery system.

The following specifications attest the car's remarkable value.

Write for a special delivery car catalogue. Please address Dept. 193

The Willys-Overland Company, Toledo, Ohio