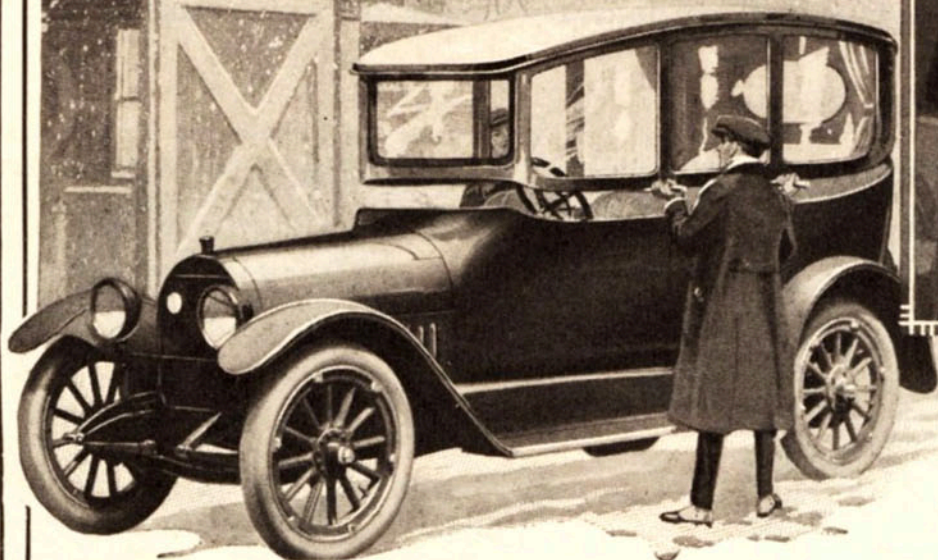


# The ALL-YEAR Car



*"I wish Dad had bought  
an All-Year Car"*

## For the family this Winter

Drive to business in a cozy ALL-YEAR Car—take the kiddies along and drop them off at school—send the car back to your wife for shopping or social duties—these are some of the advantages in owning the Kissel ALL-YEAR Car. Make it fill your every need for winter driving; then, when spring comes, transform it into a touring car by simply removing the Detachable Top.

# KISSELKAR

*Every Inch a Car*

This new Kissel idea makes possible the use of one car the year round—a touring car in summer—a handsome closed coach in winter. One car that will give complete ALL-YEAR service without the slightest sacrifice of appearance or comfort.

The new KisselKars—Touring, Roadster, ALL-YEAR Models, are very beautiful. Deep, roomy tonneaus; delightfully comfortable seats; every convenience and appointment; mechanically superb; a carefully *manufactured* car in every vital detail.

*The price range is from \$1050 to \$2000. Write for literature describing the ALL-YEAR Car and other KisselKar models.*

**Kissel Motor Car Co., 418 Kissel Avenue, Hartford, Wisconsin**