

Overland

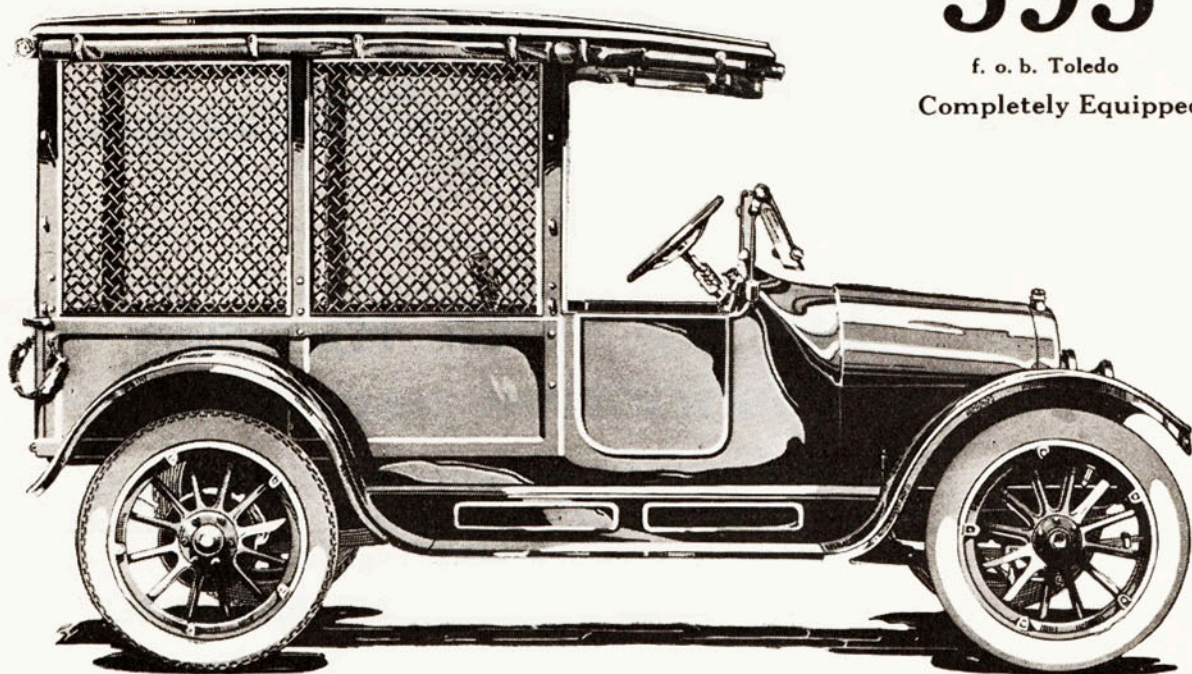
TRADE MARK REG.

MODEL 75

\$595

f. o. b. Toledo

Completely Equipped



Here Is The New Model 75 Delivery Completely Equipped for \$595

To produce the chassis of this car at this price we increased our production capacity to 1000 cars a day.

No one else building cars of more than 100-inch wheelbase has an output of half that many.

That is why we can give you such a car at a price so low as to stagger competition.

You wouldn't expect it at this price so we want to emphasize the fact—

That this car is completely and superlatively equipped.

Two unit Auto-Lite Electric Starting and Lighting system.

Four-inch tires, non-skid on rear wheels.

Demountable rims with one extra.

Electric control buttons on steering column.

It's a whirlwind success—place your order now. Deliveries start soon.

We also supply the Overland Model 83-B—35 Horsepower Panel Body Delivery Car for \$695, f. o. b. Toledo.

The Willys-Overland Co., Toledo, Ohio

"Made in U. S. A."