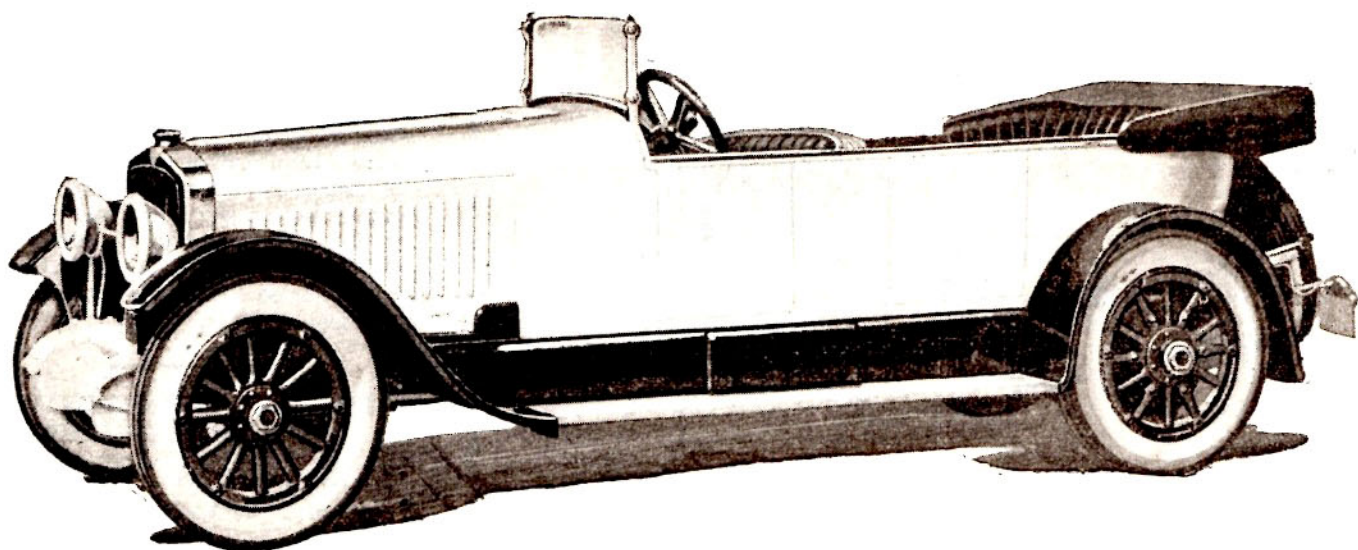


DOBLE-DETROIT

STEAM CAR



Uses Only Kerosene for Fuel

The Car That Meets War Time Requirements of Economy and Fuel Conservation

The Doble-Detroit Steam Car uses only kerosene—or even lower grade and cheaper oil for fuel.

There are no gasoline jets—no preheating or vaporizing devices.

Cold kerosene is sprayed into the combustion chamber and ignited by an electric spark.

That is one of the big differentiating factors between the Doble-Detroit and former steam propelled vehicles.

It is one of the things that make the Doble-Detroit essentially a war time car.

It is one of the things that make the introduction of the Doble-Detroit at this time particularly important and timely.

The motor car has long since passed the luxury stage.

It has become so vital a part of the life and business of the nation that it is an economic necessity.

And the motor car, we believe, finds its highest expression in the Doble-Detroit Steam Car.

The Doble-Detroit is electrically controlled.

That is another of the big differentiating factors between it and other steam propelled vehicles.

Electricity ignites the fuel and starts the car on the pressure of a button.

It makes possible the use of kerosene or lower grade oil as the sole fuel.

It makes possible a combustion chamber and generating system of marvelous compactness and efficiency.

It makes possible the automatic control of the steam pressure under varying conditions.

In a word, in the Doble-Detroit car the use of steam is refined and simplified—its efficiency is greatly increased—its control is made amazingly simple and easy.

As we said last month, we firmly believe the Doble-Detroit to be the nearest approach to the ultimate car that has yet been achieved.

This belief is based upon years of actual performance.

Doble-Detroit Steam Motors Co.
Detroit