

The New
1917

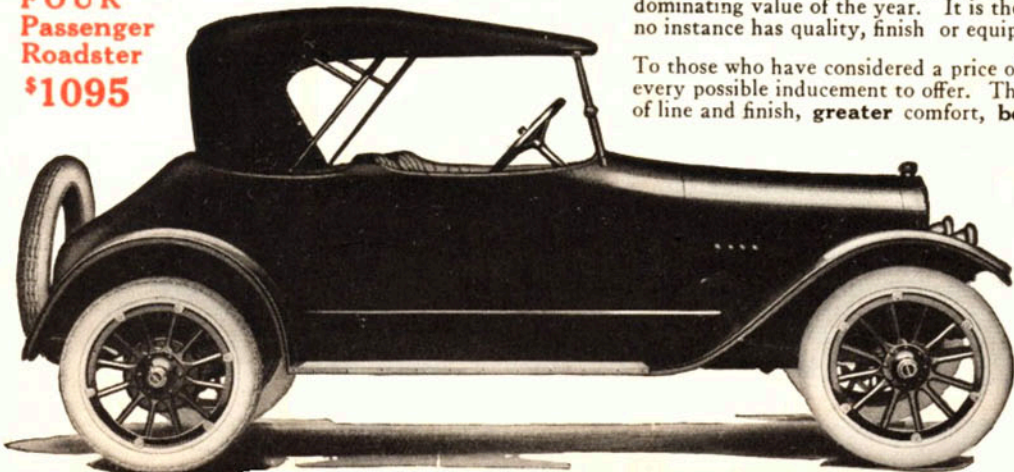
PATERSON
6-45



\$1095

Six-cylinder Paterson—
Continental Motor, Delco
Starting, Lighting and Ignition System,
Stewart Vacuum System, One-man top, De-
mountable Rims, Stromberg Carburetor.
Disappearing auxiliary seats in tonneau,
\$30 extra.

**FOUR
Passenger
Roadster
\$1095**



THERE are three distinct classes of buyers to whom the new six-cylinder Paterson 6-45 will appeal.

A demonstration of the Paterson will prove an agreeable surprise to those who have considered an investment of as high as \$1600. It will reveal that the design, construction and standardized equipment of the Paterson 6-45 at \$1095 accomplish a genuine saving. At the same time, the Paterson offers everything in the way of style, comfort, roominess and power that you expect to get **only** in cars costing considerably more.

In its own price class—cars ranging from \$1000 to \$1250—the new Paterson is the predominating value of the year. It is the **one** car that fulfills every desire. And in no instance has quality, finish or equipment been skimped to meet a price.

To those who have considered a price of from \$750 to \$1000, the new Paterson has every possible inducement to offer. The **extra** power, **abundance** of room, beauty of line and finish, **greater** comfort, **better** driving and riding qualities, all combine to make the slight additional cost a mere insignificance.

We are privileged, through increased production, to consider a few new, high-grade dealer connections.

Catalog on request

W. A. PATERSON CO.
FLINT
MICHIGAN