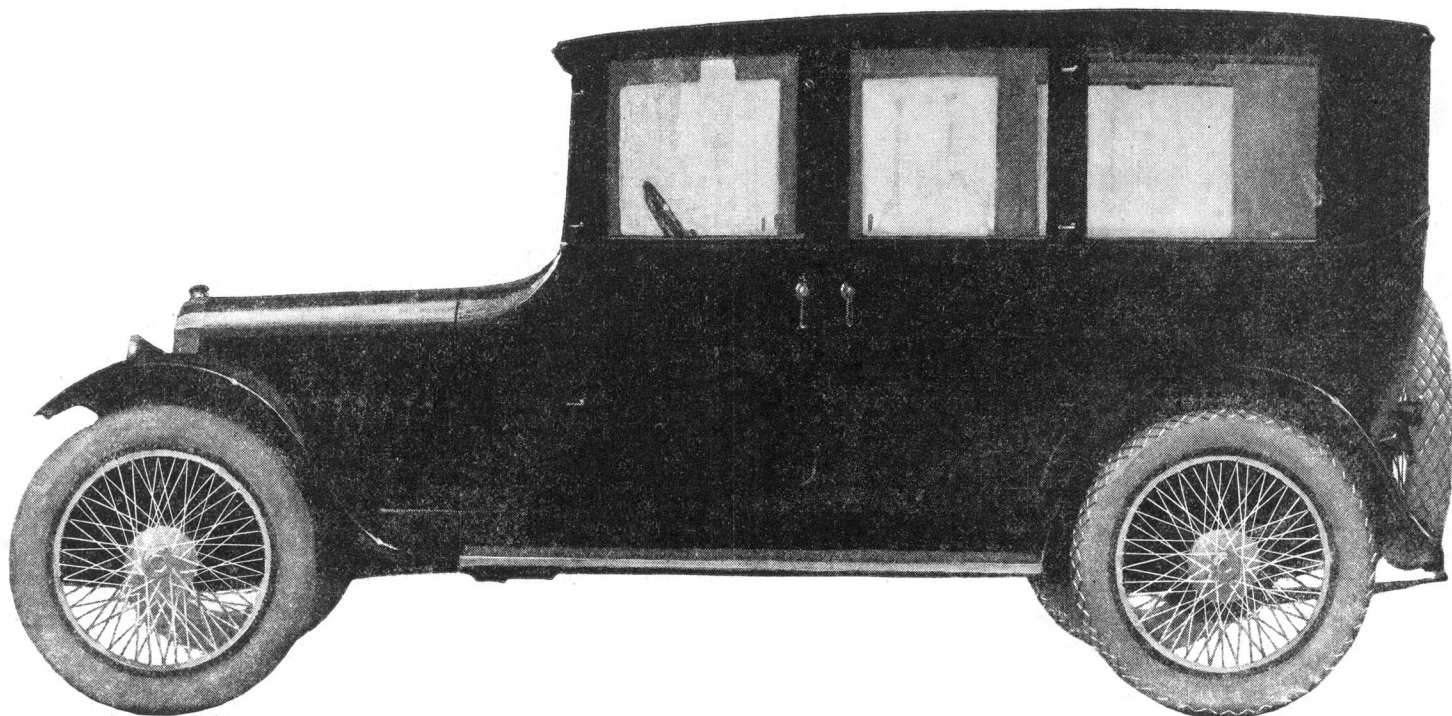




OAKLAND OWNERS REPORT RETURNS OF FROM
18 TO 25 MILES PER GALLON OF GASOLINE
AND FROM 8,000 TO 12,000 MILES ON TIRES



THIS NEW OAKLAND SENSIBLE SIX FOUR DOOR SEDAN IS POWERED WITH THE FAMOUS 44-HORSEPOWER, OVERHEAD-VALVE OAKLAND ENGINE

OAKLAND SENSIBLE SIX

JUST what *is* efficient transportation, as exemplified in this new Oakland Sensible Six four door Sedan? It is a swift and reliable conveyance for a man and his family, with security and comfort, no matter what the season or the weather, at low cost, continuously and without failure. It is the conservation of time and human energy at the minimum of expense, the combining of safe and agreeable travel with moderate investment. These are the essential elements of the service that the Oakland Sensible Six Sedan everywhere delivers; these are the things on which rests its appeal to thinking men. In utility and convenience, in endurance and economy, it represents a value not to be equaled in any other type of car.

TOURING CAR, \$1235; ROADSTER, \$1235; FOUR DOOR SEDAN, \$1885; COUPE, \$1885. F. O. B. PONTIAC, MICH. ADDITIONAL FOR WIRE WHEEL EQUIPMENT, \$85

OAKLAND MOTOR CAR COMPANY
Pontiac, Michigan