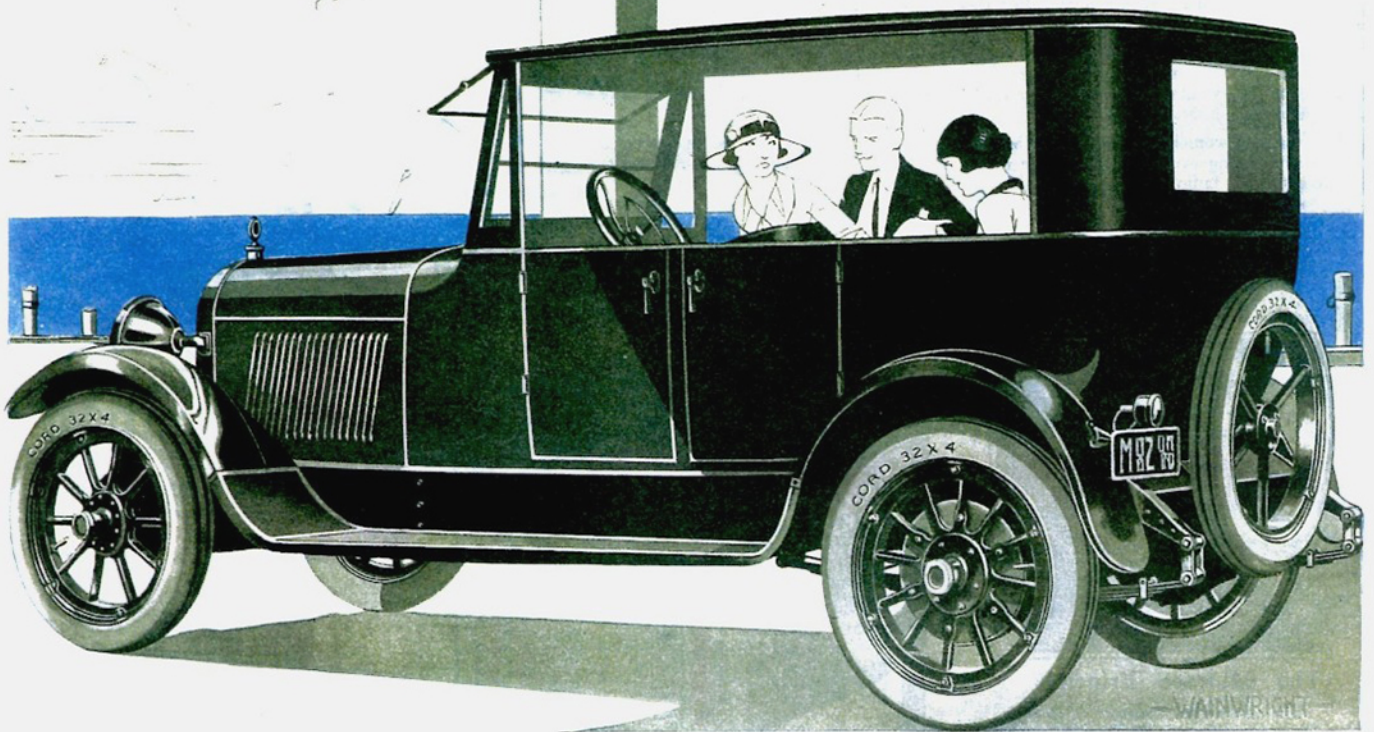


Lexington

MINUTE MAN SIX



Summer Comfort in the Lex-Sedan

THE SUCCESS of the Lex-Sedan is largely due to the fact that it is *wholly* and not partially convertible.

From windshield to back, there is touring car openness, when side windows and members are *entirely* removed.

When the sun is torrid, you *tour in the shade* under the permanent top, with every access to the breezes and your vision unobstructed.

By building the body *for the top* instead of the usual way of building the top for the body, Lexington originated this remarkable improvement in closed cars.

The Lex-Sedan has a perfectly matched top and body, a *unity* in appearance as in the built-up type, yet it is hundreds of pounds lighter, more economical on tires and fuel, free from

the usual body twists and strains, and more practical for all kinds of roads.

In winter it can be entirely enclosed. It is mounted on the famous Lexington Chassis that makes such enthusiasts of Lexington owners.

Ten large factories, specializing in motor car parts, are closely affiliated with Lexington, making possible higher quality at lower cost.

See your Lexington Dealer or write to us.

Lex-Sedan, \$2585; Thorobred (Sport Model), \$2285; Touring Car, \$2185; Sedanette, \$3150; Coupé, \$3150—All Series "S" models equipped with cord tires.

Above prices f. o. b. factory and do not include taxes of any kind.

Lexington Motor Company, Connersville, Indiana, U. S. A.