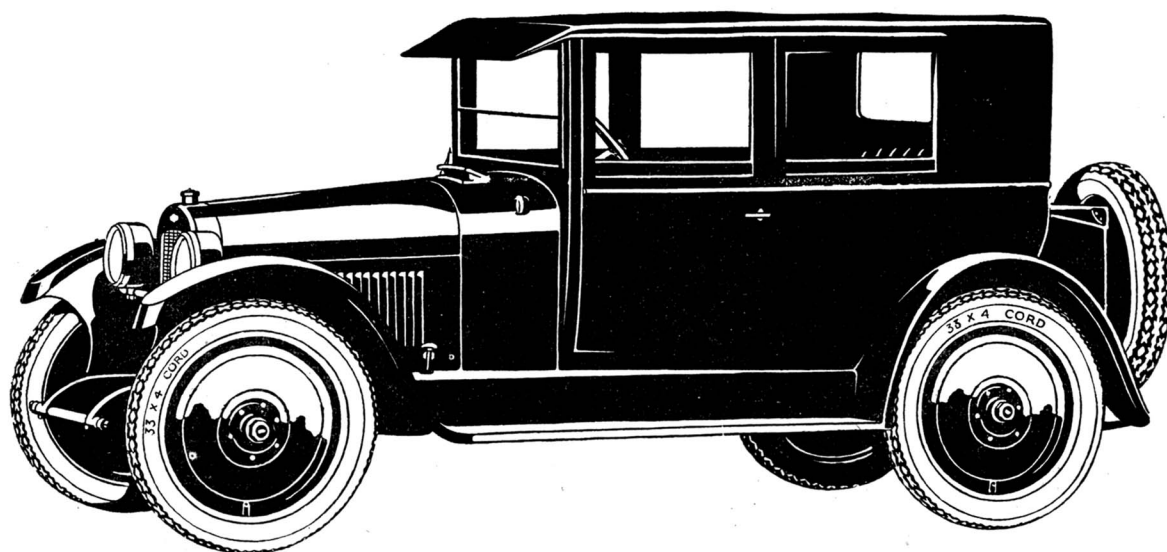


NASH



Price \$1275, f. o. b. factory—*Five Disc Wheels and Nash Self-Mounting Carrier, \$25 Additional*

The New Nash Carriole

The New Nash Carriole provides fresh proof of Nash enterprise and progressiveness.

From the viewpoint of the Nash dealer, it means a wider market, increased business, and greater profits.

So that now the Nash franchise is even more intensely desirable than ever before.

A few available territories are ready to be closed. Write at once.

Features and Appointments of the Carriole—All-metal body. Two restful parlor-car chairs in front. All windows except rear are adjustable. Silken curtains. Capacious pockets in doors. Dome light. Commodious, strongly built, patent leather finish trunk mounted upon trunk rack at rear. Heavy nickel-plated guard bars at back of body. Enhanced smoothness and power responsiveness. Greater mileage per gallon of fuel. Barrel-type cowl and head lamps. Cowl ventilator. Transmission lock.

Nash Motors Company, Kenosha, Wis.