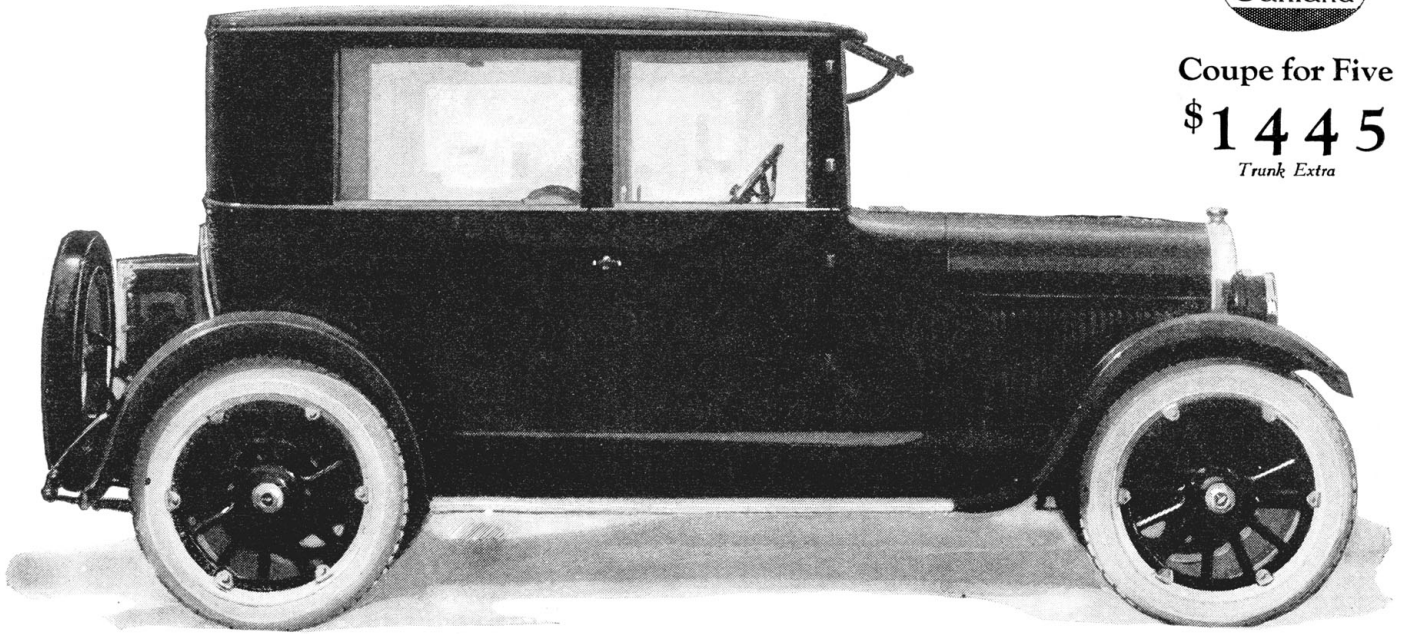




Coupe for Five
\$1445
 Trunk Extra



Choose A Closed Car As You Would Your Home

Pictured here is Oakland's Coupe for Five. Roomy as many sedans—easy to handle as a roadster—this Oakland model provides unequalled comfort and convenience for the owner who prefers a Coupe but occasionally needs accommodations for five passengers.

Oakland builds this closed car with the same care, the same pride, the same watchful and constant supervision that you would employ in building a home.

It combines a chassis of proved mechanical excellence (see "Mileage-Basis Plan") with one of the finest of Fisher-built bodies! The interior is cozy, compact and yet very commodious. Worthy of particular note are the deep-cushioned Pullman seats. The rear seat will remind you of

a luxurious davenport. Beautiful plush mohair upholstery is used throughout.

Unusually wide windows, affording unobstructed vision, are mechanically raised and lowered. You can dim the lights and operate the gas, spark and horn without removing either hand from the steering wheel. Nickel trunk bars, visor, dome light, rear view mirror, silver-faced instruments on walnut instrument

board—these are but a few of the many details contributing to this Coupe's beauty and utility.

See this Oakland model at your dealer's today. Convince yourself of its superior worth.

Then, for your own protection, reserve your car for prompt delivery just when you want it and at the present low prices.

The "Mileage-Basis Plan"

Main Bearings—40,000 miles or more without attention.
Valves—15,000 miles or more without need of grinding.
Connecting Rods—40,000 miles or more without attention.
Cylinders, Pistons, Rings—Guaranteed in writing 15,000 miles.
Gas Mileage—20 to 25 miles per gallon.
Tires—15,000 to 25,000 miles per set.
Transmission, Axles, and Major Parts—Life of the car.

OAKLAND MOTOR CAR COMPANY, PONTIAC, MICHIGAN
 Division of General Motors Corporation

Other 1923 Oaklands

Touring Car . . . \$995	Sport Roadster . \$1145	Coupe for Two . \$1185
Roadster 975	Sport Touring . 1165	Sedan 1545

F. O. B. Factory

Oakland "6"