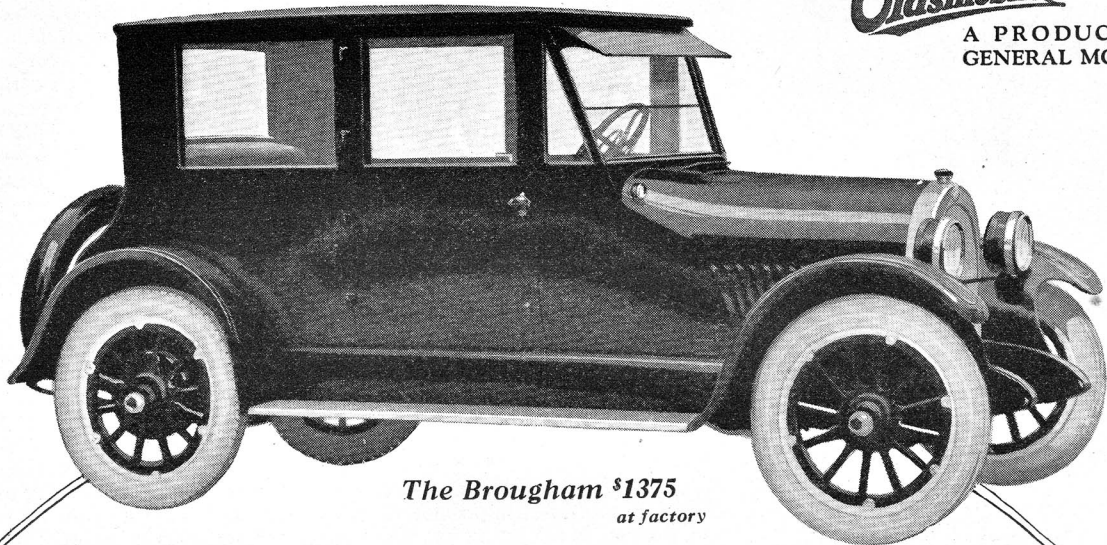


Oldsmobile

A PRODUCT OF
GENERAL MOTORS



*The Brougham \$1375
at factory*

Buy a Complete Closed Car

*The new Oldsmobile Brougham at \$1375 has no equal
in value and completeness*

When we say that the 5-passenger Oldsmobile Brougham is the most complete closed car of its type and price, we hope you will challenge our statement. We want you to check the Brougham, point by point, with cars of this type and get the facts at first hand.

Keeping the low price of the Brougham in mind, try to find the equal of these remarkable features:

All Steel Covered Body. No panels of composition materials to warp and deteriorate rapidly. The Brougham is paneled in steel from floor to roof. You are entitled to standard closed body construction.

Front Seats are Pullman Type Chairs. The front seats are used the most—we have made them fully as comfortable as the wide rear seat, with soft upholstery, deep springs and high non-folding backs.

Luggage Should be Under Cover. The locked luggage compartment under the deck at the rear is just right for a traveling bag.

Headlights that Spell Safety.

The headlights are brilliant and powerful, yet legal in every state. The anti-glare corrugations in the reflectors make lenses and visors obsolete. A distinctive Oldsmobile feature.

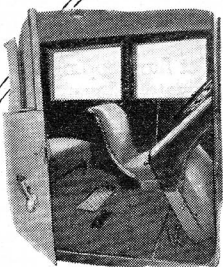
Match this Equipment. Heater, door locks, cowl ventilator, sun visor, windshield wiper, high grade upholstery, satin silvered hardware, cowl lamps, nicked radiator, one-piece crown fenders, transmission lock, dome light, window lifters and shades, walnut steering wheel and walnut finished instrument board.

Chassis Endorsed by General Motors. Built by Oldsmobile and approved by General Motors—a double assurance of high quality—the Brougham Four chassis is famous for its economy and endurance records. Its wheelbase of 115" is in contrast to the 110" wheelbase average of all competitive fours.

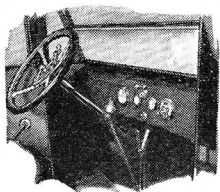
Measured by the only impartial yardstick—comparison—the Brougham is the supreme price-value opportunity in complete closed cars.

OLDS MOTOR WORKS, LANSING, MICHIGAN
Division of General Motors Corporation

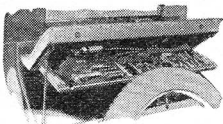
Price Range: Fours—\$975 to \$1595; Eights—\$1375 to \$2025 f. o. b. Lansing



The front seats tilt forward giving unusual entrance space for passengers or bulky luggage.



The instruments on the walnut finish instrument board are separately removable for service.



The tools, carried in the luggage compartment, are accessible without disturbing the passengers.



The seat room and leg room are ample for five grown-up people.

OLDSMOBILE