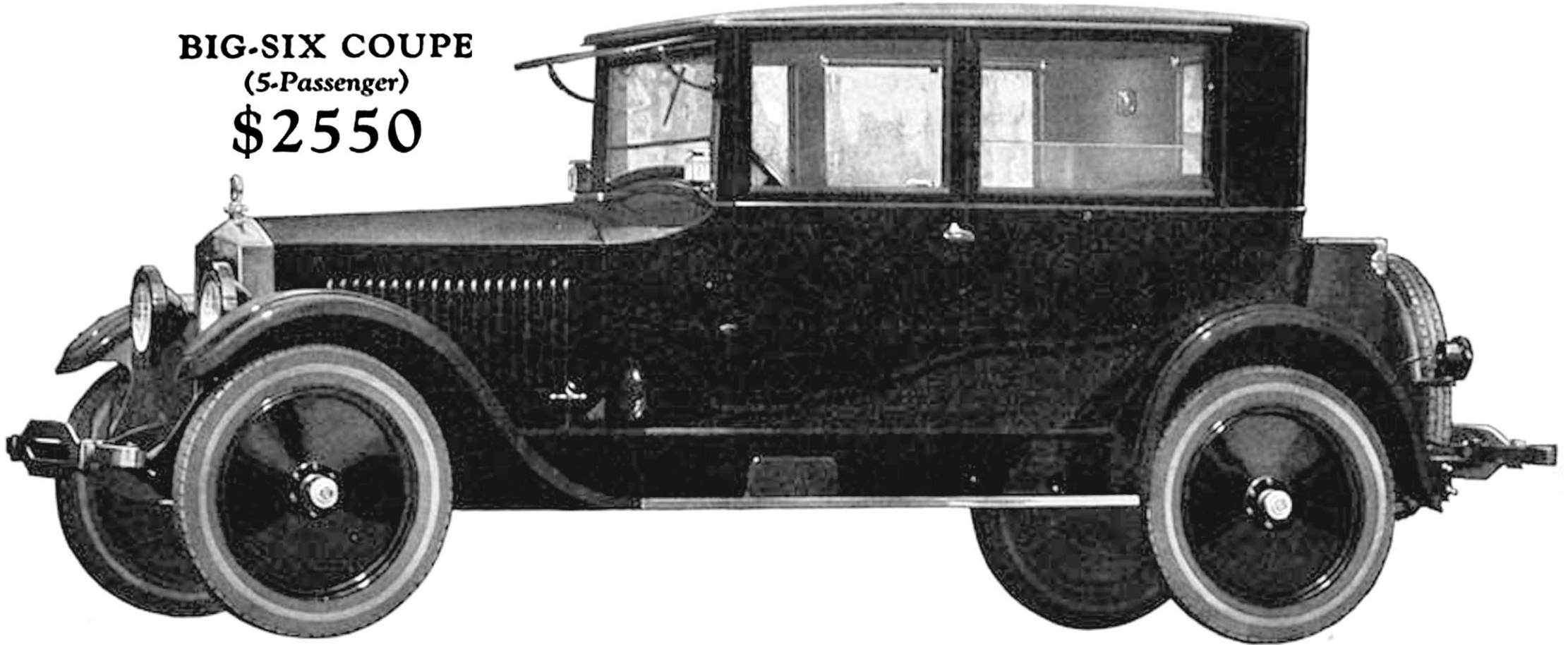


S T U D E B A K E R

BIG-SIX COUPE
(5-Passenger)
\$2550



Studebaker has gone far beyond current practice to make the Big-Six Five-Passenger Coupe a motoring feature of the year.

The interest which it has attracted at the shows indicates it will be one of the most popular fine car models.

There is no compromise in its appearance or construction. Studebaker has incorporated every important improvement known to quality manufacture to make this Coupe as fine a five-passenger car as is purchasable.

Lines are long and low; windows exceptionally wide; cushions deep and soft. Upholstery is in rich brown velour, with carpeting to match.

The full width rear seat accommodates three adults. The auxiliary seat beside the driver is in reality a cushioned arm

chair and will be found restful even for long-distance travel.

The equipment of this luxurious car is as exceptional as its appearance and performance. Extra disc wheel and tire, commodious trunk, walnut all-wood steering wheel with new type spark and throttle control—these are among many unusual features.

The quality is high—better materials, design and workmanship than Studebaker employs are not obtainable.

Reliability and long life are assured—50,000 Big-Six owners testify to the faithfulness and stamina of the Big-Six chassis.

The character of its products, maintained for 71 years, has made Studebaker the world's largest manufacturer of six-cylinder cars.

Extra disc wheel complete with cord tire, tube and tire cover. Handsome nickel-plated bumpers, front and rear. Trunk and trunk cover. Automatic windshield cleaner. Rear-view mirror. Combination stop-and-tail light, courtesy light and handsome

coach lamps. Nickel-plated radiator shell, motometer with lock and ornamental radiator cap. Quick-action cowl ventilator of cast aluminum. Aluminum-bound running boards with corrugated rubber mats and step pads. Aluminum kick plates. Glare-

proof glass visor. Walnut steering wheel and improved type spark and throttle control. Heater. Flower vase. Snubbers. Opalescent corner reading lights. Jeweled eight-day clock. Upholstery of rich, dark brown velour.

1923 MODELS AND PRICES — f. o. b. factories		
LIGHT-SIX 5-Pass., 112' W. B., 40 H. P.	SPECIAL-SIX 5-Pass., 119' W. B., 50 H. P.	BIG-SIX 7-Pass., 126' W. B., 60 H. P.
Touring.....\$ 975	Touring.....\$1275	Touring.....\$1750
Roadster (3-Pass.)..... 975	Roadster (2-Pass.)..... 1250	Speedster (5-Pass.)..... 1835
Coupe-Roadster (2-Pass.)..... 1225	Coupe (4-Pass.)..... 1875	Coupe (4-Pass.)..... 2400
Sedan..... 1550	Sedan..... 2050	Coupe (5-Pass.)..... 2550
		Sedan..... 2750

THE STUDEBAKER CORPORATION OF AMERICA
South Bend, Indiana

Studebaker

T H I S I S A S T U D E B A K E R Y E A R