

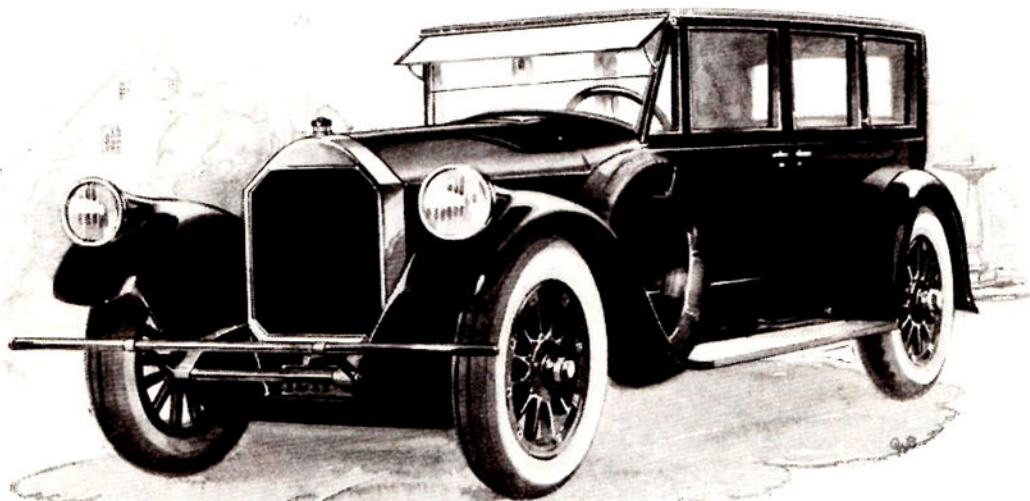
# PIERCE- ARROW

Those who live their lives against a background of pleasant things, gracefully done, select the Pierce-Arrow Dual-Valve Six not alone for the quality of service which it renders, but also for the distinction with which it renders that service. It is obvious that such a car cannot be built except by a group of rarely skilled craftsmen, producing only a limited number of cars.

THE PIERCE-ARROW MOTOR CAR COMPANY BUILDS TWO TYPES OF MOTOR CARS,  
THE DUAL-VALVE SIX IN THIRTEEN BODY STYLES, AT \$5,250 AND UPWARD; THE SERIES 80  
IN SEVEN BODY STYLES, AT \$2,895 AND UPWARD

## DUAL-VALVE SIX

*Open cars \$5,250 Closed cars, \$7,000 at Buffalo*



*The Pierce-Arrow Dual-Valve Seven-Passenger Enclosed Drive Limousine built for A. Watson Armour, Esq. Mr. Armour chose for this car a Brewster green finish, with gray striping on body and hood. The belt is of black, the wheels gray with green striping. The upholstery in taupe affords an effective contrast.*