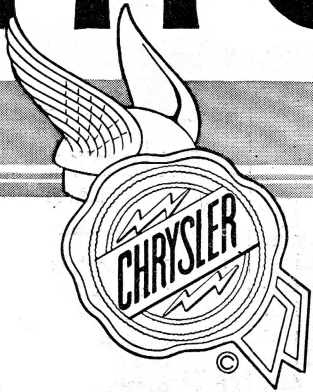
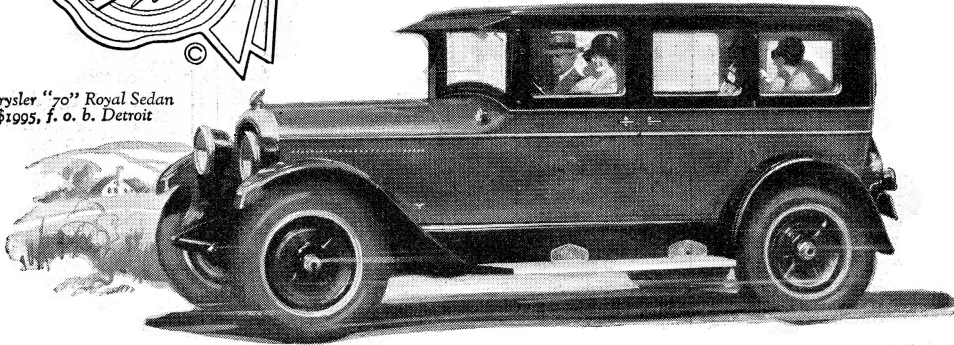


CHRYSLER



Chrysler "70" Royal Sedan
\$1995, f. o. b. Detroit



To All Women Who Do Not Ride In A Chrysler "70"—

Whatever car you ride in—or drive, if you are one of the great army of women drivers—we can promise you an entirely new delight in the Chrysler "70."

For the Chrysler "70" offers literally all of the things which women want most in their own cars.

Comparatively few women, it is true, care to ride as fast as 70 miles an hour; but the power which is indicated by 70 miles plus represents the utmost in acceleration, in smoothness, as well as in speed ability.

And think of a car without side-sway—a car so easy riding that you can travel at high speeds over cobbled streets or rutted roads—a car

which steers with such unbelievable ease that all-day touring does not fatigue—a car made so safe by Chrysler hydraulic four-wheel brakes, and so compactly designed for easy parking, that you handle it with implicit confidence in any situation.

Chrysler is admittedly the style leader among motor cars—and that, of itself, is a genuine satisfaction.

The Chrysler dealer is eager to have you look at the beautiful Chryslers and give a leisurely inspection to all of their attractive features. Let him demonstrate its performance to you. Drive the car yourself—and then the next car in your family will be a Chrysler "70."

CHRYSLER SALES CORPORATION, DETROIT, MICH.
Chrysler Corporation of Canada, Limited, Windsor, Ontario

CHRYSLER "70"—Phaeton, \$1395; Coach, \$1445; Roadster, \$1625; Sedan, \$1695; Royal Coupe, \$1795; Brougham, \$1865; Royal Sedan, \$1995; Crown Sedan, \$2095; Disc wheels optional.

CHRYSLER "58"—Touring Car, \$845; Roadster Special, \$890; Club Coupe, \$895; Coach, \$935; Sedan, \$995. Disc wheels optional. Hydraulic four-wheel brakes on all Chrysler "58" models at slight extra cost.

CHRYSLER IMPERIAL "80"—Phaeton, \$2645; Roadster, (wire wheels standard equipment; wood wheels optional), \$2885; Coupe, four-passenger, \$3195; Sedan, five-passenger, \$3395; Sedan, seven-passenger, \$3595; Sedan-limousine, \$3695.

All prices f. o. b. Detroit, subject to current Federal excise tax. There are Chrysler dealers and superior Chrysler service everywhere. All dealers are in position to extend the convenience of time-payments. Ask about Chrysler's attractive plan. All Chrysler models are protected against theft by the Fedco patented car numbering system, exclusive with Chrysler, which cannot be counterfeited and cannot be altered or removed without conclusive evidence of tampering.

Bodies by Fisher on all Chrysler enclosed models. All models equipped with full balloon tires.

