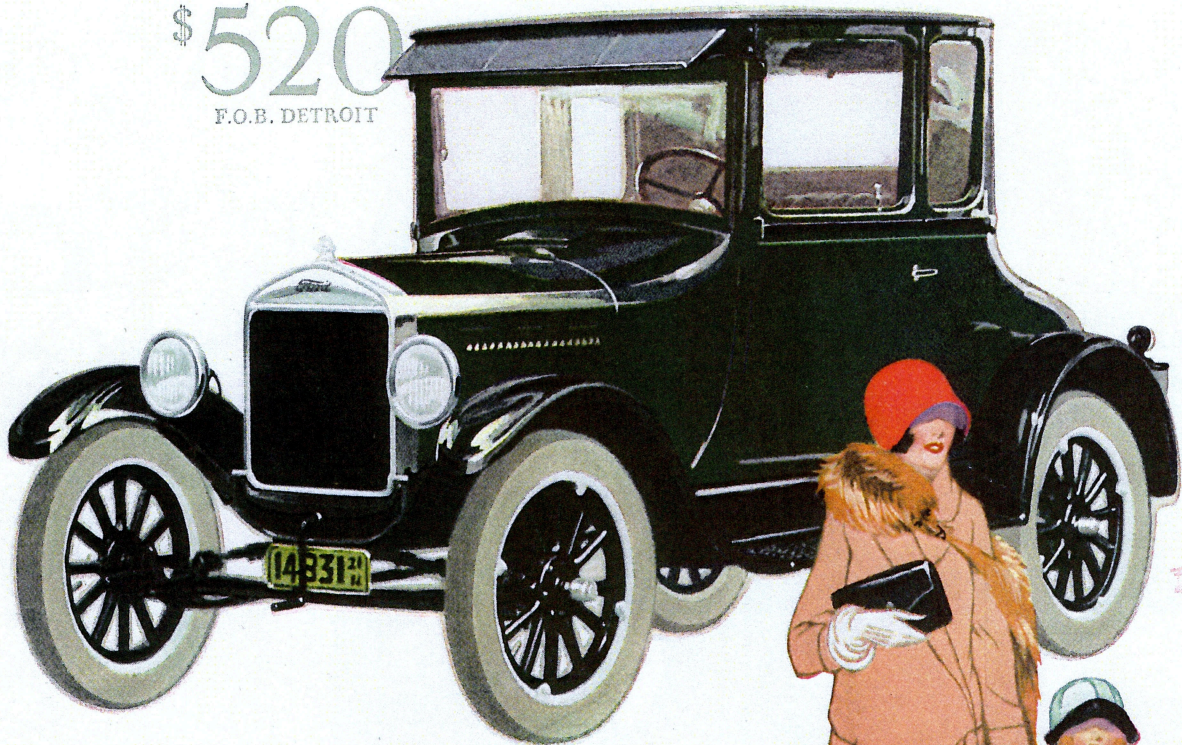


\$520  
F.O.B. DETROIT



Floyd S. Stoughton

The Ford Coupe with all-steel body finished in deep Channel Green, having interior upholstery to harmonize, and embodying many important refinements in body and chassis, is an ideal car for a woman's personal use. You will particularly like the

streamline effect of the body, the placing of the gas tank under the cowl where it may be conveniently filled from outside the car, the generous compartment under rear deck, the one-piece windshield with hooded sun visor, and the attractive, cozy interior.

Coupe \$520 / Tudor Sedan \$580 / Fordor Sedan \$660 / f. o. b. Detroit

Ford