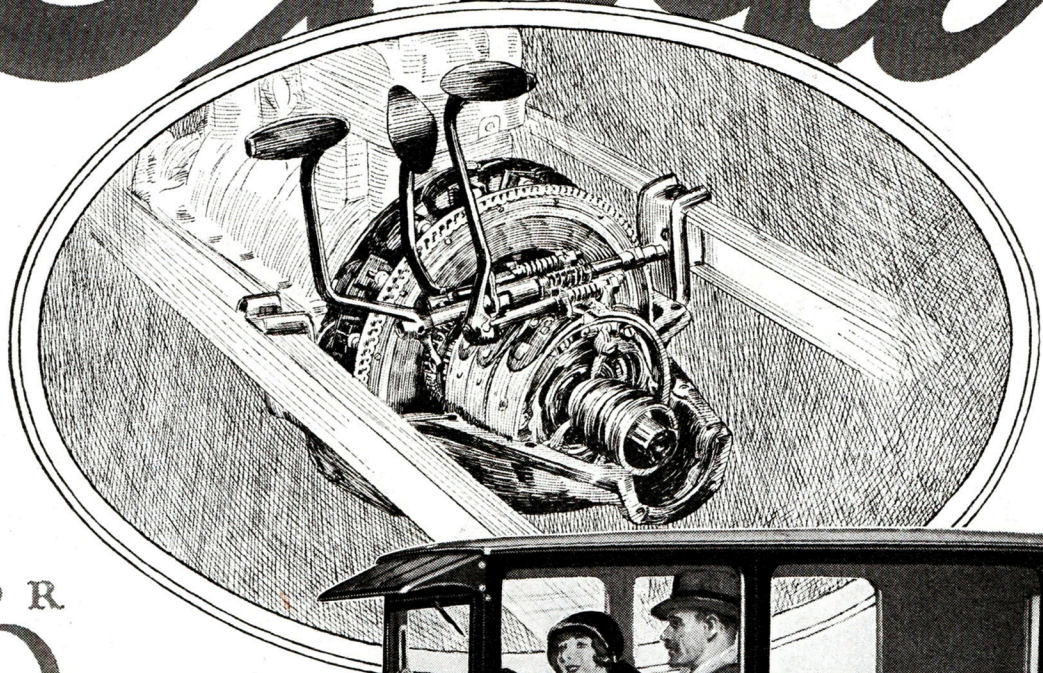
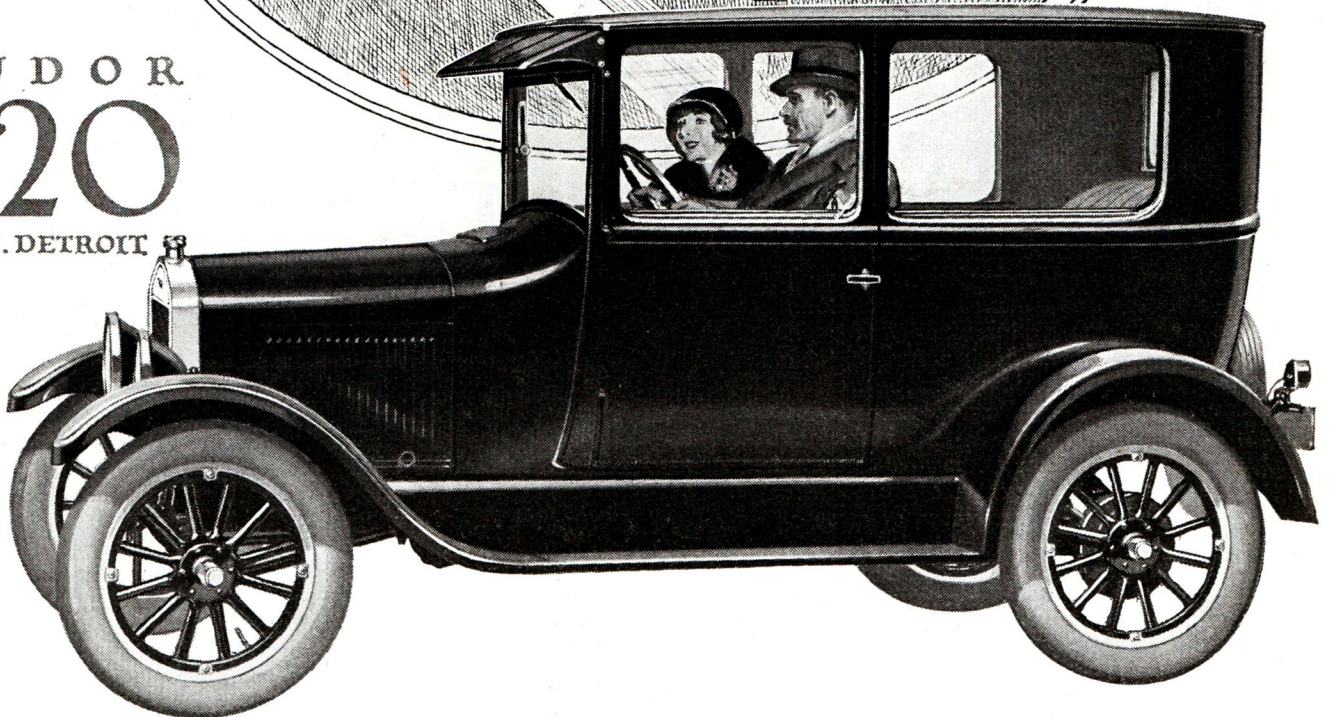


Ford



TUDOR
\$520

E.O.B. DETROIT



The Planetary Transmission Costs More to Build But Gives Better Light Car Control

THE planetary transmission was developed as the simplest, most direct and reliable means of speed control for light cars. While this type costs more to build, its advantages far outweigh other considerations. Your car is more flexible in traffic — with starts, stops and speed changes made faster and more easily. Complete control through foot pedals makes it unnecessary

to remove your hands from the wheel. Gears are constantly in mesh, preventing the possibility of stripping. The transmission, therefore, stands harder abuse; there are no costly replacements. Ford economy methods alone make it possible to build this superior transmission into Ford cars, yet keep Ford prices the lowest ever offered. FORD MOTOR COMPANY, *Detroit, Michigan*

RUNABOUT \$290, TOURING \$310, COUPE \$500, TUDOR SEDAN \$520, FORDOR SEDAN \$565

All Prices f. o. b. Detroit