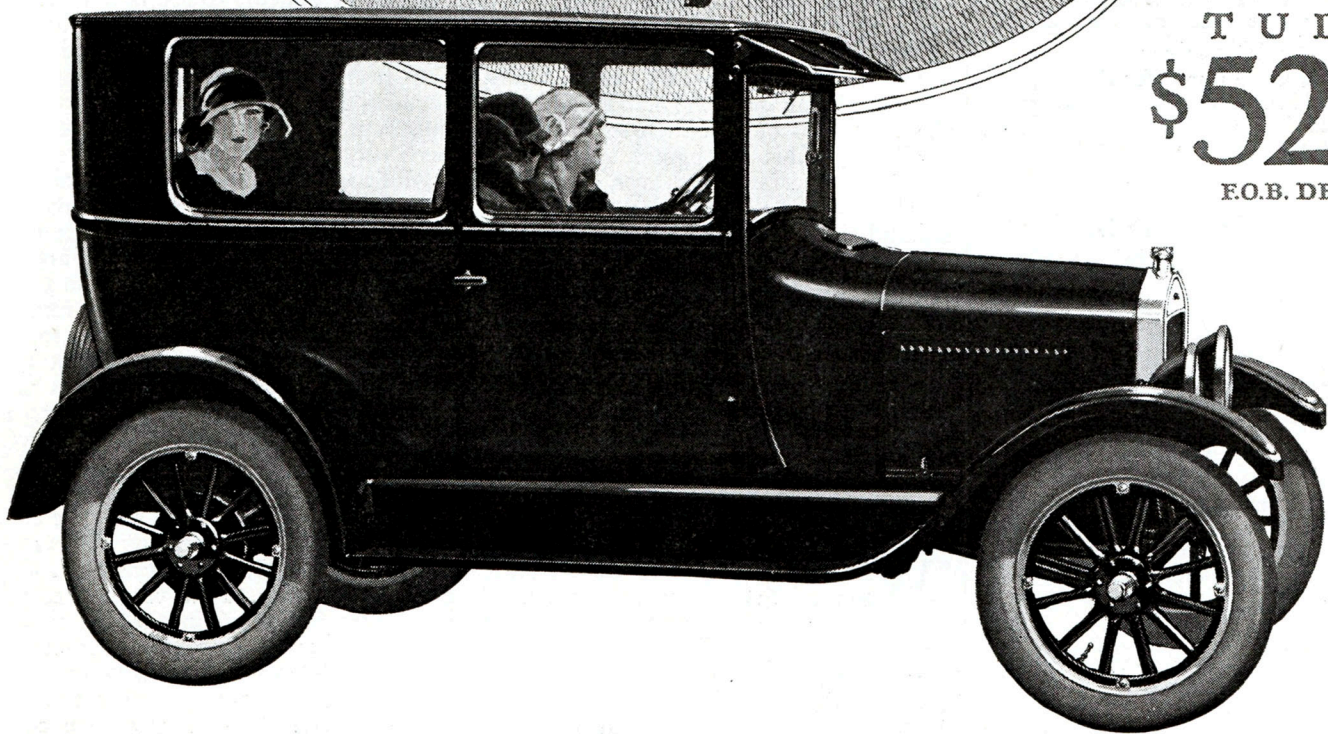
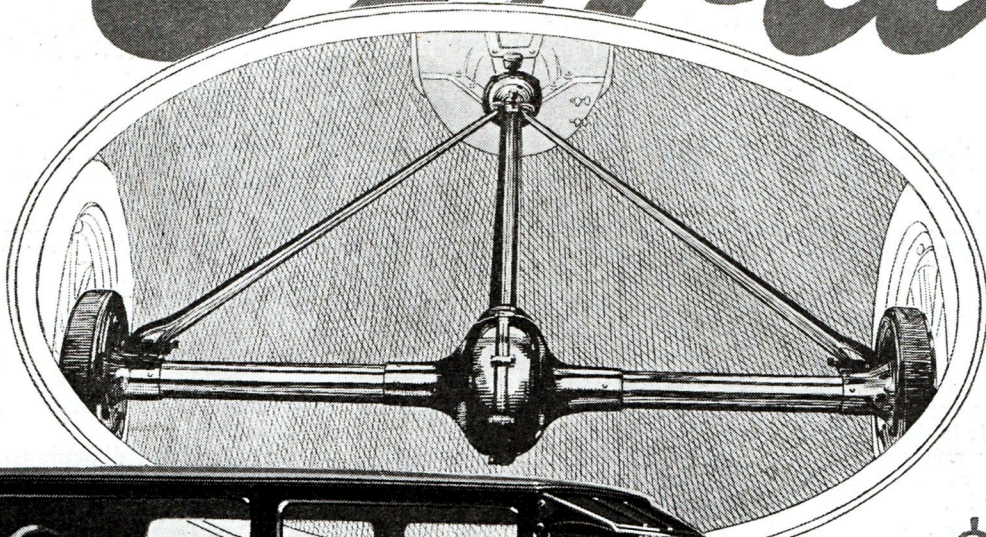


Ford



TUDOR
\$520
F.O.B. DETROIT

“The Torque Tube Drive”—An Original Ford Idea

One of the notable features of Ford car design since 1903 is the torque tube drive, a method of applying and controlling the driving and braking forces which has definitely and conclusively established its superiority.

This is accomplished simply and effectively by means of a single torque tube surrounding the driving shaft. Not only are the torque reactions taken up, but the driving thrust is carried to a point well for-

ward on the chassis—giving the most efficient application of the car's motive power. Moreover, this driving thrust is carried on a line almost parallel with the ground, relieving the car from vertical thrusts.

With this construction, two diagonally attached radius rods are used, assuring alignment of the rear axle, leaving the springs free to act solely as flexible supports for the load.

FORD MOTOR COMPANY, *Detroit, Michigan*

RUNABOUT \$290, TOURING \$310, COUPE \$500, TUDOR SEDAN \$520, FORDOR SEDAN \$565

All prices f. o. b. Detroit