

HEAVY SPEED WAGON DUTY

Capacity 2-Tons

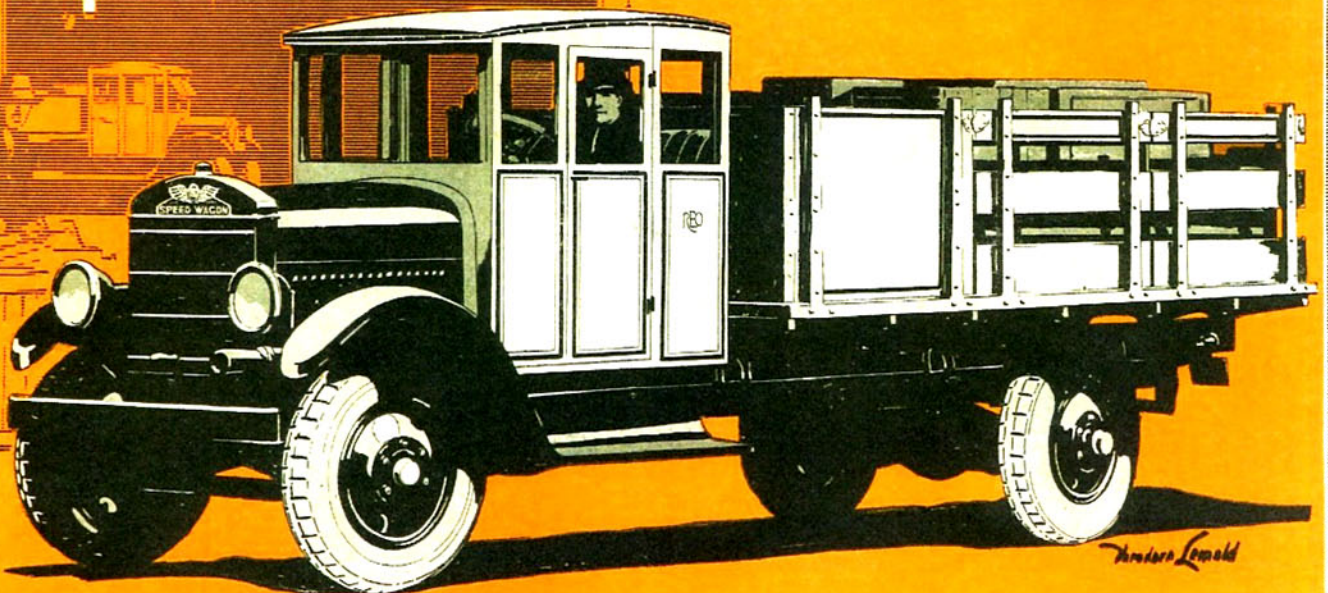
Six Cylinders

Expediency of truck travel is not simply a one-way proposition. It must consider the return trip.

The Heavy Duty Speed Wagon's 3900 pounds of chassis weight is exactly distributed. The final drive is the type most completely suited to rapid-transit service.

Thus, the vehicle can maintain a time-saving pace without rattle, rack, shock or strain to chassis parts—even when hurrying back empty for another load.

REO MOTOR CAR COMPANY
Lansing, Michigan



Anders Lemold