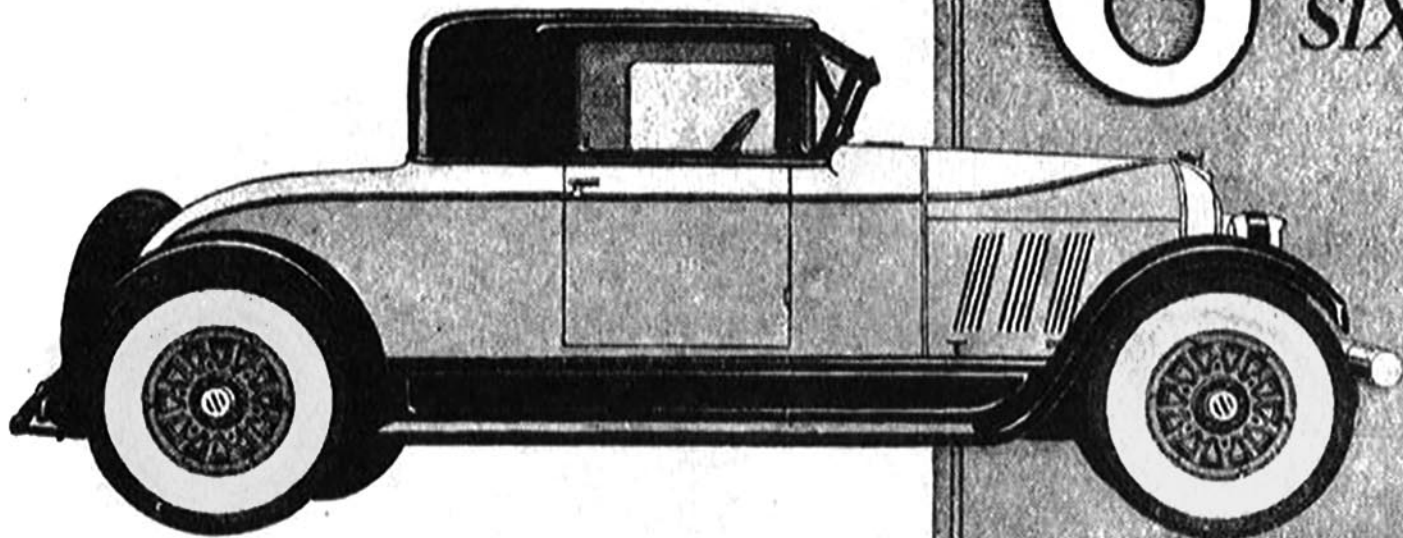


AUBURN 6 SIXTY SIX



The Coupe

A CAR of dual personality—*handiness* for about town and *hardiness* for cross country tours.

Especially designed as a "business" car for those who want the convenience and exclusiveness of a three passenger closed car for personal use.

It has all the advantages, such as easy parking, of a "little" car without the disadvantages.

It also has all the advantages, such as roominess, and comfort of a "big" car without being top-heavy, over-weight or clumsy.

It offers the restful luxury possible only with long wheel-base and a real full-size automobile where nothing is skimped or omitted.

It is built for continuous reliable transportation—to run better and longer with less attention—to perform better and handle easier—to do *all things better* than ordinary cars, and to do many things other cars cannot do. Cradled in the center of its long, low chassis the passengers enjoy a buoyant comfort that is new to motoring.

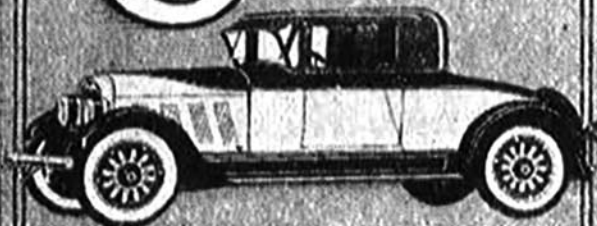
All Auburn Coupes have very newest fabric bodies of most attractive two tone finish; that are lighter, give greater gasoline and tire economy and are free from ordinary body noises and rumble.

Compare the Auburn point for point with any other car, drive it and test it, if it does not sell itself you will not be asked to buy.

AUBURN AUTOMOBILE COMPANY
AUBURN, INDIANA

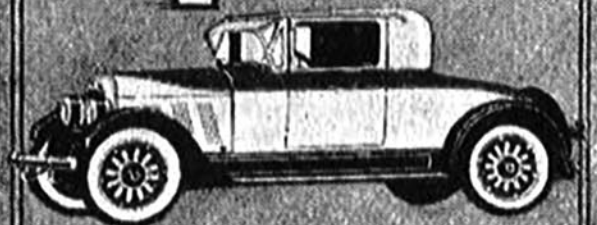
6-66 Coupe—121 inch wheel-base. $3\frac{1}{4}$ " x $4\frac{1}{2}$ " six cylinder motor. Not a "pocket edition Six." Low, smart and rugged.

8 EIGHTY EIGHT



8-88 Coupe—129 inch wheel-base. $3\frac{1}{4}$ " x $4\frac{1}{2}$ " eight cylinder motor. The superlative in style, luxury and performance.

4 FORTY FOUR



4-44 Coupe—120 inch wheel-base. $3\frac{5}{8}$ " x 5" four cylinder motor with 5-bearing crankshaft. Ten years of comfortable, dependable, economical transportation.