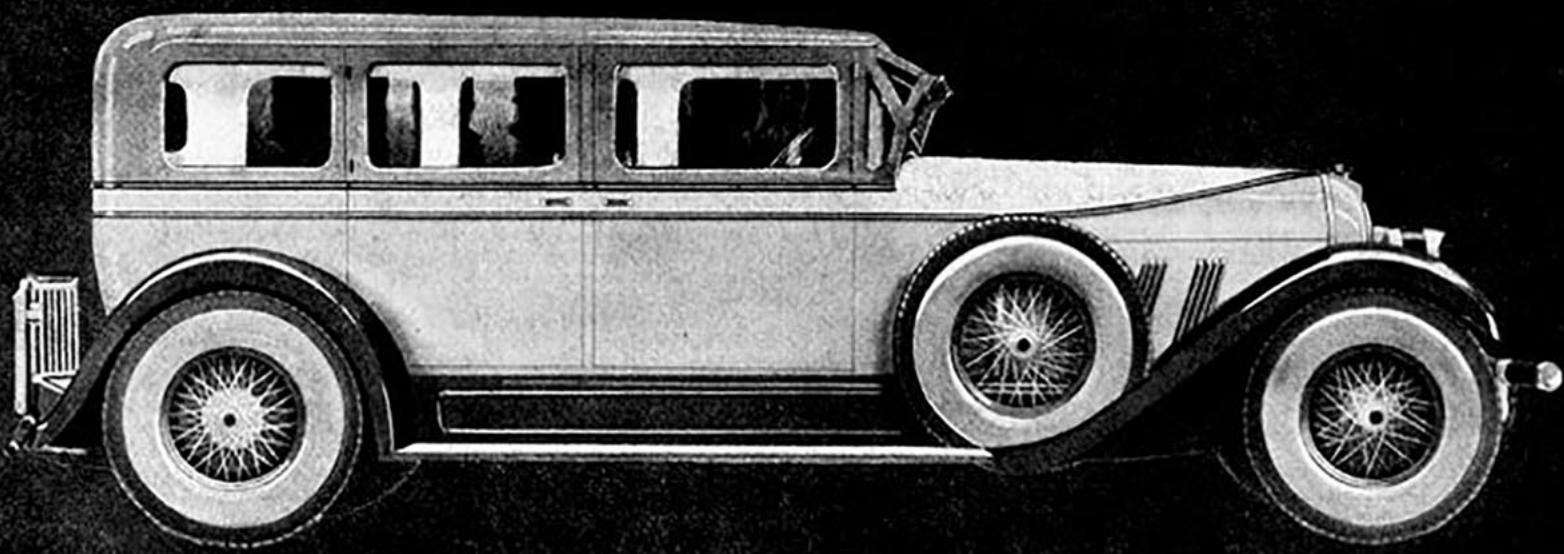


STRAIGHT EIGHT



8-88 Sedan • 130 inch wheelbase • 80 miles per hour • \$2195

New Comforts • New Ease of Handling New Factors of Safety New Kind and Degree of Performance

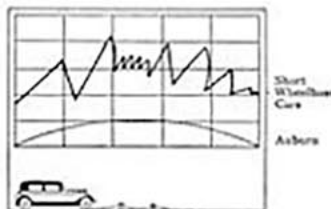
Straight Eight for Price of Sixes

Radical changes and improvements are taking place in automobile building that are not all obvious to the eye. They must be experienced. Auburn is a pronounced leader in this new development, as the new Auburn cars so strikingly prove. These improvements are not simply "niceties" or vague "refinements," but are definite, fundamental betterments that completely obsolete yesterday's type of engineering.

Comparison is necessary to appreciate what vast progress has been made in every way; seemingly limitless power; responsiveness with a minimum of effort; almost unbelievable ease of handling; a smoothness at all speeds that is a distinct revelation; a totally new standard of comfort and sense of safety that not only saves your body from fatigue but equally desirable, relieves your mind from anxiety. Add to those pronounced achievements a structural strength and inherent stamina that enables the Auburn to maintain its peak of efficiency over a longer period of time, free from ordinary troubles, rattles and annoyances and keeps it a stranger from repair shops. No wonder Auburn owners feel they enjoy advantages years ahead of others. No wonder Auburn dealers are content to simply let you drive the car and if it does not sell itself you will not be asked to buy.

6-66 Roadster • \$1095	8-77 Roadster • \$1395	8-88 Roadster • \$1995
6-66 Sport Sedan • \$1195	8-77 Sport Sedan • \$1495	8-88 Sport Sedan • \$2095
6-66 Sedan • \$1295	8-77 Sedan • \$1695	8-88 Sedan • \$2195
8-88 7-Passenger Sedan • \$2595	Freight, Tax and Equipment Extra	

AUBURN AUTOMOBILE COMPANY, AUBURN, INDIANA



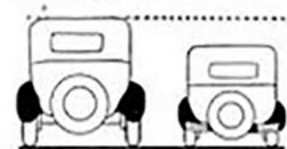
Only 1/4 of the Road Shocks

The thing responsible for this is the fact that the springs are of exceptional length and perfectly fat under full passenger load. The spring shackles are under tension at all times giving a snubbing action to the springs. The unsprung weight is held to minimum consistent with safety.



40% Less Muscle Effort to Steer

10 to 1 reduction in steering gear instead of the average of 12 to 1. Bull thrust on the long pins on the front axle. Ball joint steering connections, etc. Less weight on the front wheels on account of a long wheelbase. Passenger weight does not add materially to the weight on the front axle when car is fully loaded.



Lower

Our car has been lowered without sacrifice of head room on account of lengthening the wheelbase and the widening of the tread. Also on account of lowering of the seats.



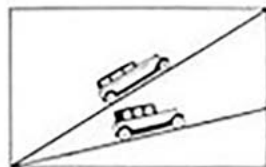
Hugs the Road and Why

The Auburn Car hugs the road due to lower design and lower center of gravity for the same reason that the present design of bicycle is much more easily balanced and holds the road better than the old high wheeled type.



Sit Lower—More Head Room

Still have more head-room; advantages of the low driving position. Lower driving position gives sense of security both from the ability of the car to hold the road at high speed, and the ability to turn corners at high speed.



25% Greater Climbing Efficiency

The multiple cylinder engine produces greater and more continuous torque at lower engine speeds. Light weight of car increases horsepower per pound of car weight.

AUBURN

Your Next Car