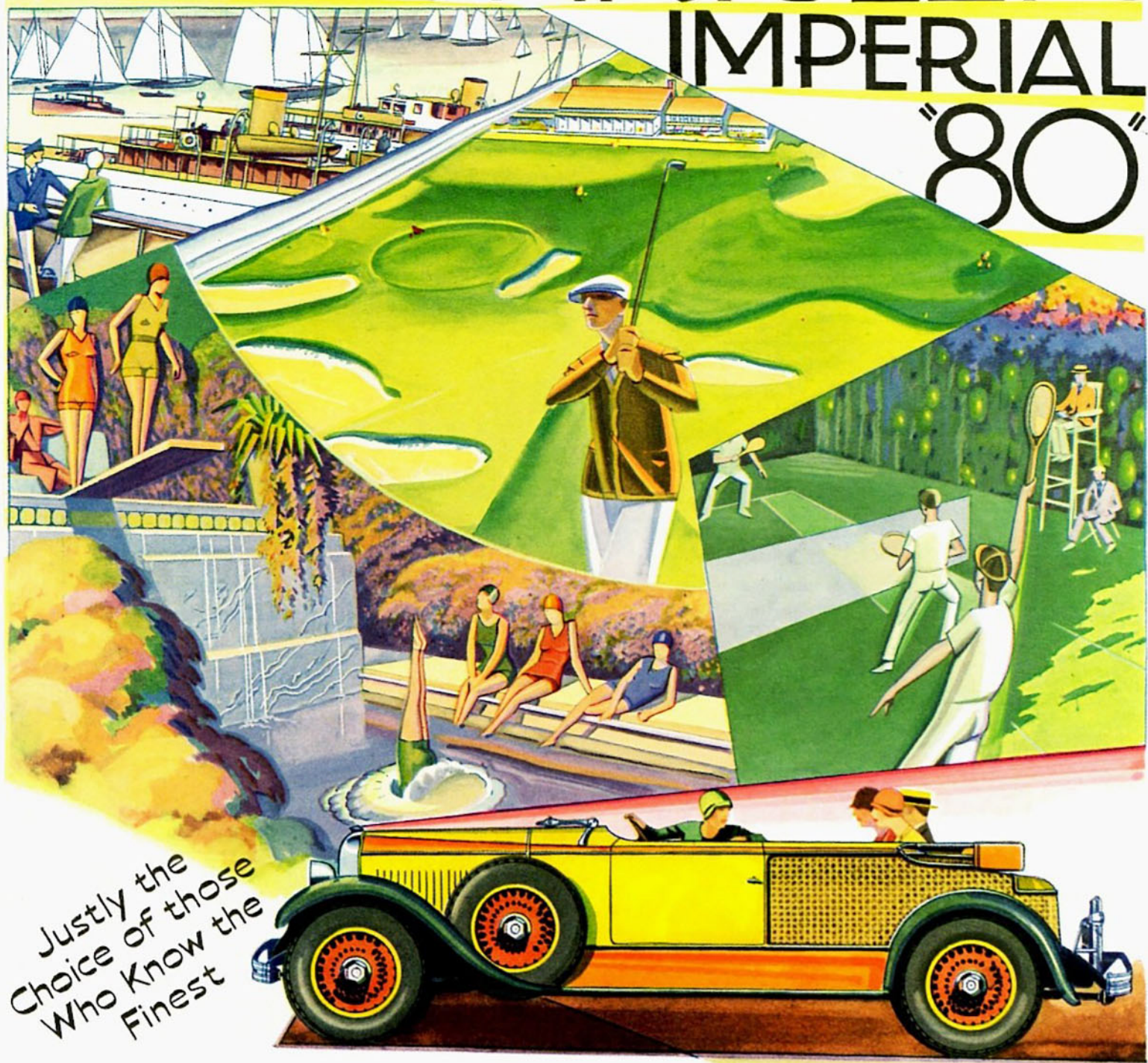


THE NEW

112 H.P. CHRYSLER IMPERIAL "80"



Justly the
Choice of those
Who Know the
Finest

Every day the new 112 h. p. Chrysler Imperial "80" is winning new allegiances—winning new owners from among motorists familiar with the best of other cars.

Because, by every test by which automobiles are judged, it is superior to these other cars in performance, quality and value.

Not alone because it is one of the world's most powerful motor cars, but because that power is translated into terms of flawless performance.

Not alone because its bodies are remarkable for their long graceful lines, their fine upholstery and fittings, their charm and diversity of chromatic coloring. But because in these hand-built bodies by Chrysler, Locke, LeBaron and Dietrich, is that well-defined note of restraint that speaks true smartness.

For performance with superlative comfort and the individuality of exclusive bodies, this splendidly-engineered and precision-built Chrysler is justly the choice of those who know the finest motor cars. Hence, the swing to the new 112 h. p. Imperial "80."

Roadster (with rumble seat), \$2795; Five-Passenger Sedan, \$2945; Town Sedan, \$2995; Seven-Passenger Sedan, \$3075; Sedan-Limousine, \$3495; also in custom-built types by Dietrich, LeBaron and Locke. All prices f. o. b. Detroit.