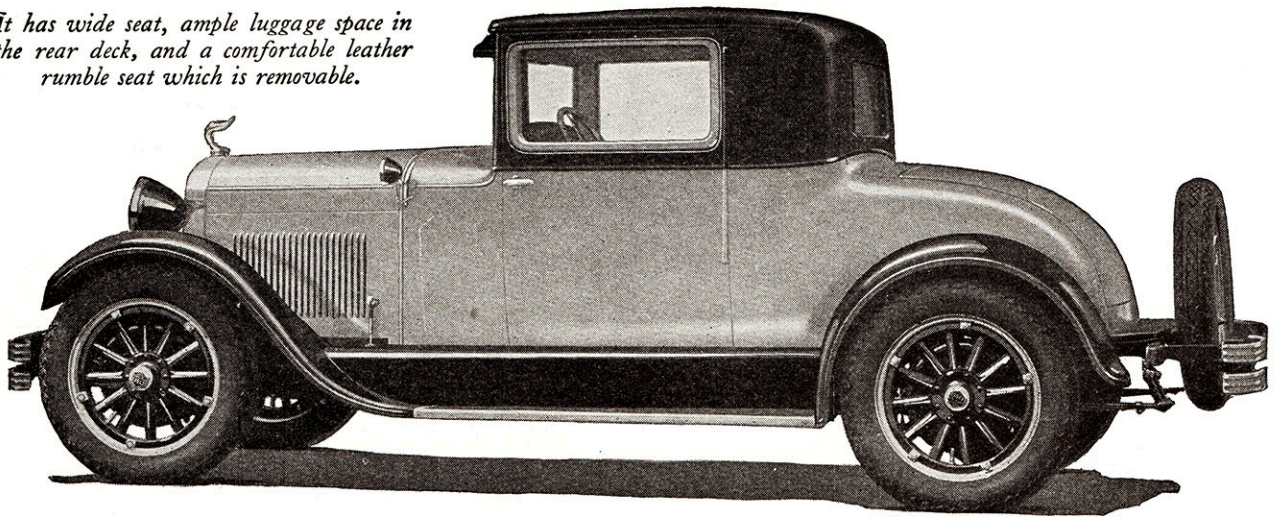


ESSEX COUPE

It has wide seat, ample luggage space in the rear deck, and a comfortable leather rumble seat which is removable.



World's Greatest Value *altogether or part by part*

An instant winner everywhere—a buying wave that sweeps away all records—a public ovation of greater success to the most successful “Six” in history. That is the reception to the New Essex Super-Six.

Boston and territory with 800 sales in 10 days; and Detroit and Wayne County, with 659 Essex retail sales in 15 days—an unapproached record—merely reflect the countrywide triumph.

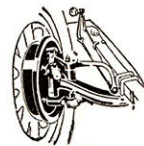
The New Essex is easily the greatest Essex Super-Six in history.

And the same advantages that account for its popularity with individual users give it preference with fleet buyers and for business use.

One of our representatives is near you. Write or wire.

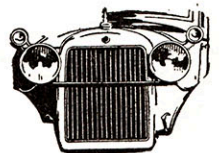
HUDSON MOTOR CAR CO.
Detroit, Mich.

The New **ESSEX Super-Six**



Bendix four-wheel brakes—the type used on costly cars.

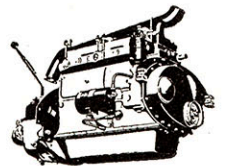
Vertical lacquered radiator shutters—a beauty and utility feature.



Wide, heavily crowned fenders, of a quality nowhere equaled on this price car.



Exclusive patented Super-Six high-compression, high efficiency motor, and featuring the famous Essex performance.



OTHER FEATURES:

- 5-inch Balloon Tires
- Slender Steering Wheel (Steel Core)
- 5-Dial Instrument Board
- Wide Doors
- Silenced Body Construction