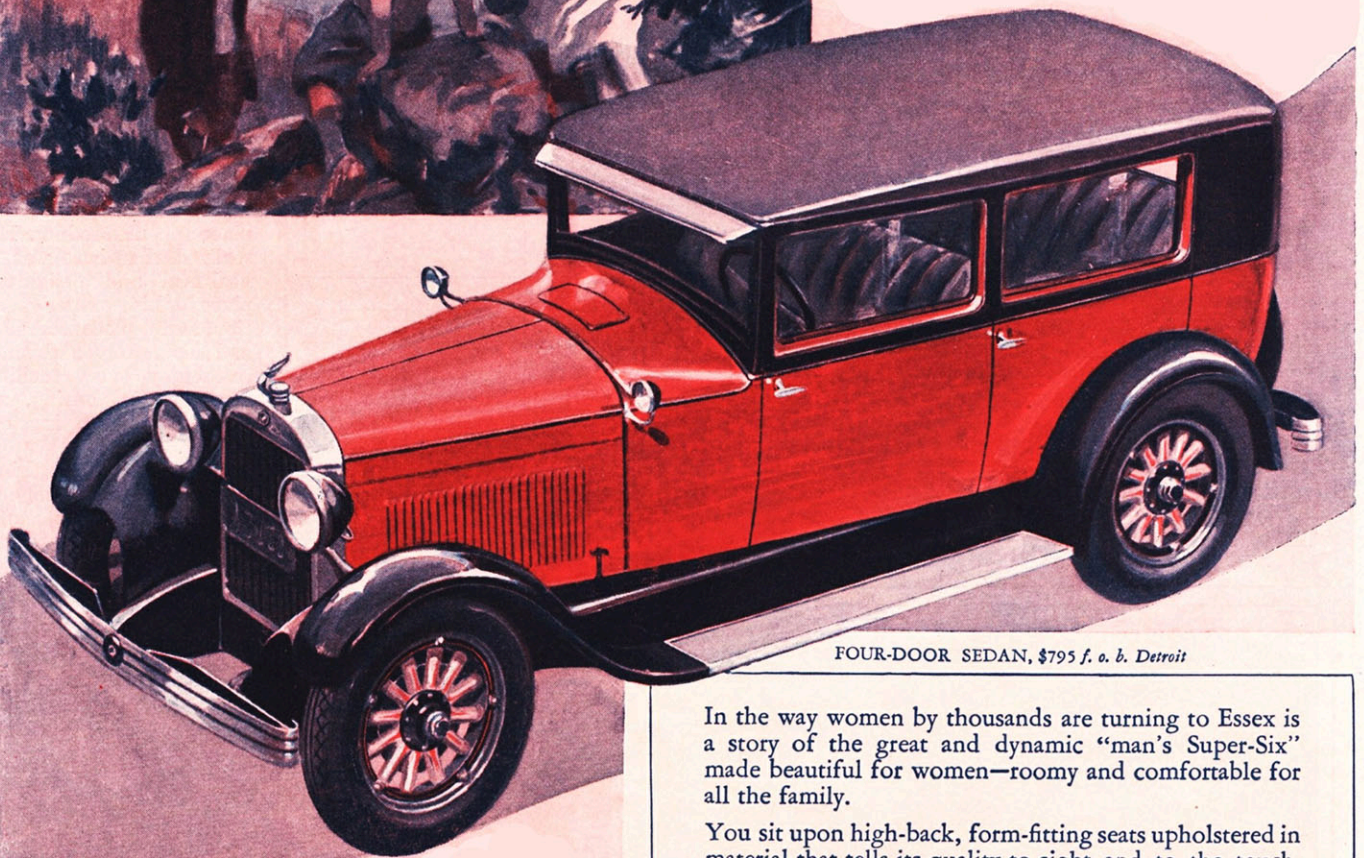


WORLD'S GREATEST VALUE



Fine Car
Transportation

*At Lowest Cost
per Mile*



FOUR-DOOR SEDAN, \$795 f. o. b. Detroit

The New
ESSEX
Super-Six

In the way women by thousands are turning to Essex is a story of the great and dynamic "man's Super-Six" made beautiful for women—roomy and comfortable for all the family.

You sit upon high-back, form-fitting seats upholstered in material that tells its quality to sight and to the touch. The winged radiator figure leads the eye out over a shining rhythm of cowl, hood, polished saddle type lamps and graceful arching fenders to the smoothly flying highroad.

You have before you every control in their most natural and handy place. And all about you, the paneling, the weather-stripped doors, the silenced body construction, the floor-matting and the hardware in graceful silvery patterns speak quietly and certainly of quality.

In these and such things as the slender black rubber, steel-core, finger-scalloped steering wheel; the worm and tooth disc steering mechanism and the vertical radiator shutters, Essex visibly duplicates costly car practice, as it does also in the hidden things you never see.

HUDSON MOTOR CAR COMPANY DETROIT, MICHIGAN