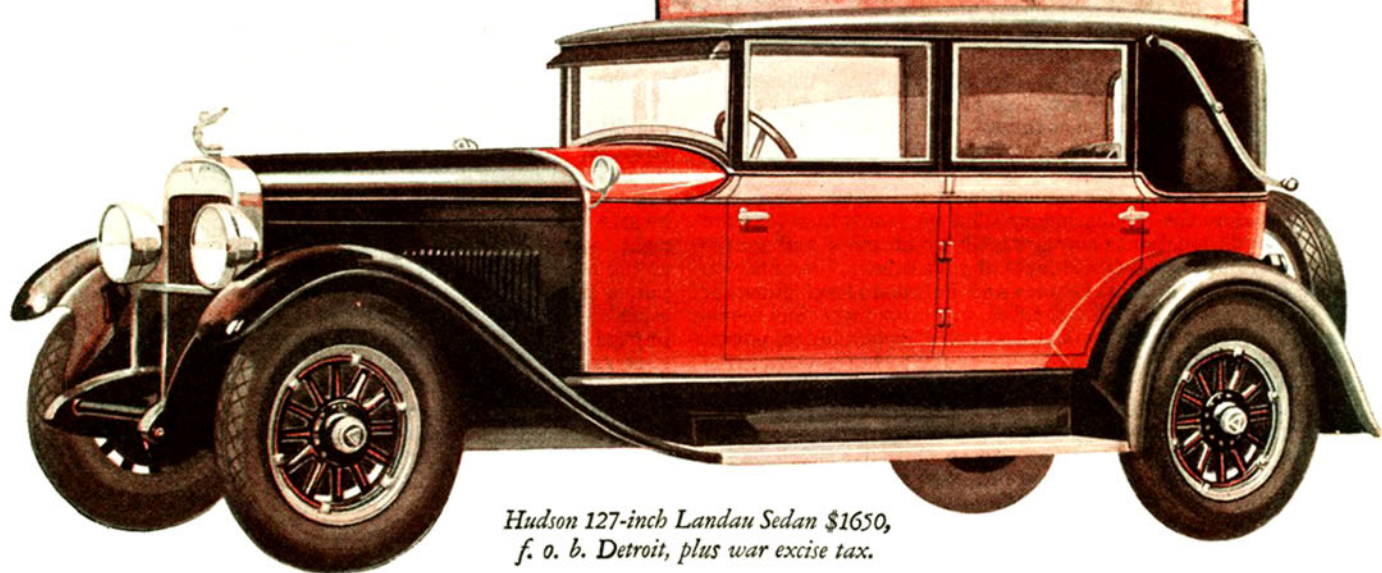


The New
HUDSON-ESSEX
SUPER SIXES

AS the Super-Sixes have achieved and led the mechanical possibilities of the day, so in these new models they achieve and lead a new mode in beauty and fine car appointment.

Yet their value is not alone in these splendid physical attributes. It is an accumulation of values including company stability, permanent progressive policies, financing on the most favorable terms, and a service policy that enlists the active interest of every dealer in making Hudson-Essex service as outstanding as the cars themselves.



*Hudson 127-inch Landau Sedan \$1650,
f. o. b. Detroit, plus war excise tax.*

*New Models
that reflect Tomorrow's
Vogue*

HUDSON MOTOR CAR COMPANY DETROIT, MICHIGAN