

Hudson 127-inch Landau Sedan



HUDSON ESSEX

ONLY TWO SUPER-SIXES

What that means to Motordom

Public acknowledgment of the performance and reliability—the smartness and value of the exclusive and patented Super-Six is heard from all motorists.

And further proof is found in sales which outnumber any other six.

Year after year this basic principle has given to Hudson and Essex the advantage of smoothness and reliability beyond any other engineering development. And with this advantage there has been constant improvement in performance—with greater acceleration, higher speed and continuous reliability.

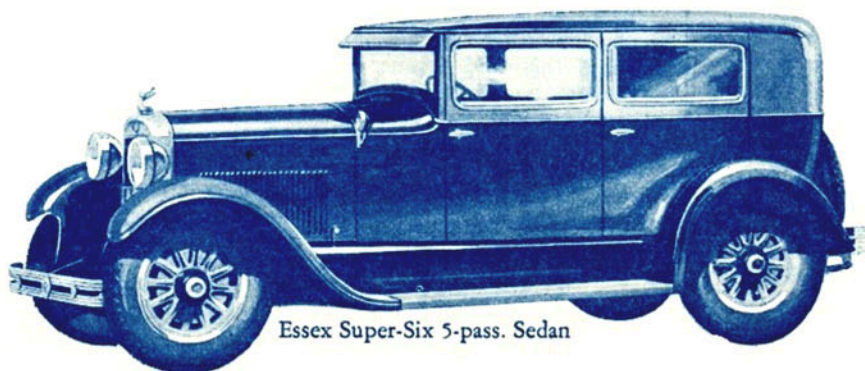
Hudson is available in eight body types, priced from \$1250 up, f. o. b. Detroit

Modern in every sense of design and mechanical excellence and with bodies and fittings in advance of cars of their price class, both Hudson and Essex rightly enjoy the reputation of being the outstanding values of motordom.

No motor equals the fame of the Super-Six. No chassis excels in reputation all the qualities that count for performance satisfaction.

And no cars have such distinctive price attractions. Sales prove that. Owners confirm it and all motordom acknowledges it.

Essex is available in four body types, priced from \$735 up, f. o. b. Detroit



Essex Super-Six 5-pass. Sedan