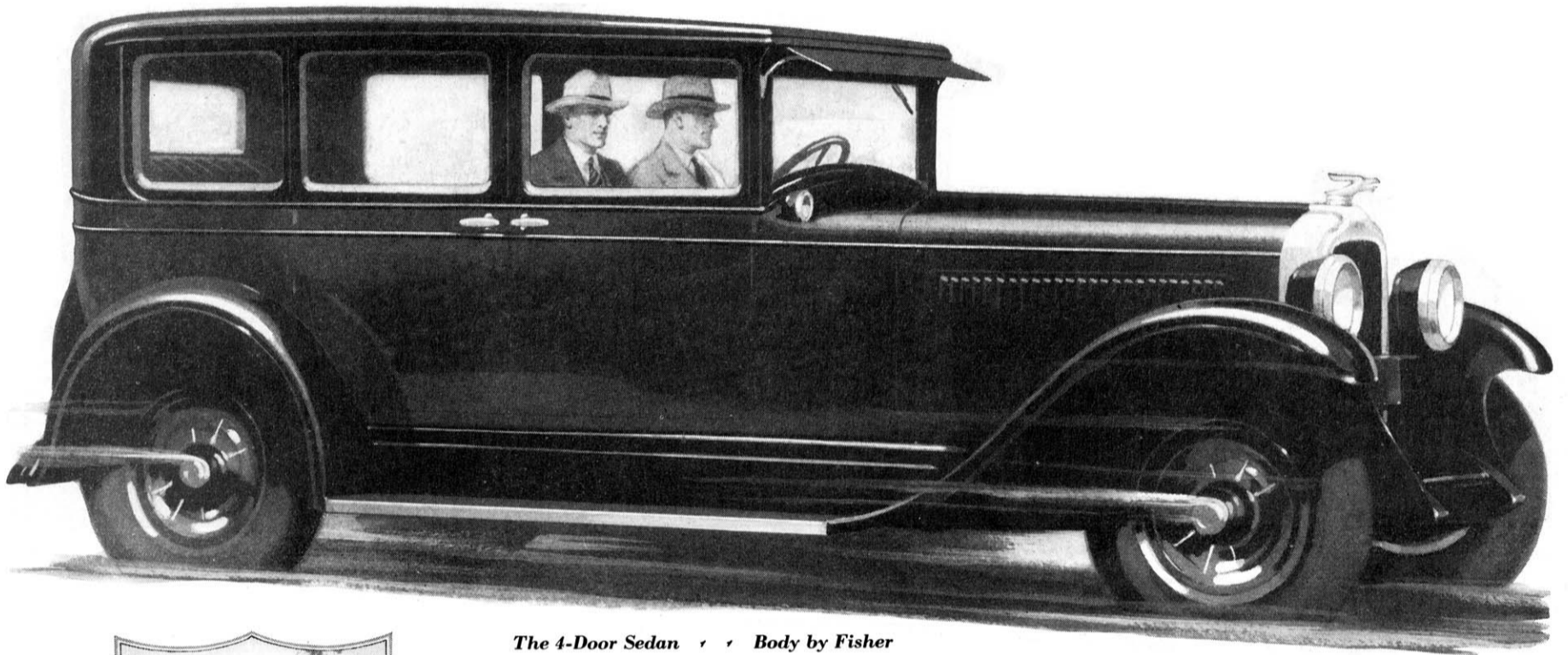
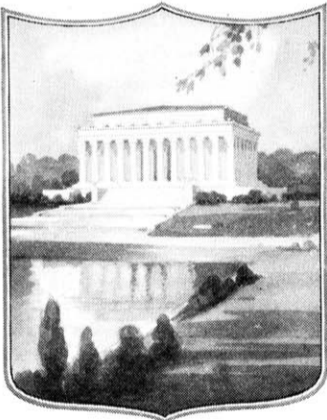




Where can you match this engine for Size * Advancements * Performance?



The 4-Door Sedan * * Body by Fisher



The Lincoln Memorial in Washington, D. C. All America's Tribute to Abraham Lincoln.

Here's a question of facts and figures. No opinions . . . no preferences involved. Where can you match this whispering brute of an engine in a car approaching the All-American in price?

* * *

Where else can you find 212 cubic inches displacement? A 79-pound crankshaft, harmonic balancer, the equal of the famous G-M-R cylinder head?

* * *

Where else can you find this combination . . . gasoline pump instead of the conventional vacuum system . . . triple protection by oil, air and gasoline filters, down-draft

crankcase ventilation, cylinder block and crankcase of bridge-truss design?

* * *

And where can you match its impressive performance? Its power, its speed and its thrilling change of pace? Where else can you look for such smoothness and silence . . . Where for such completely unruffled mastery of mileage and time?

* * *

Look for all of them elsewhere. Perhaps some day you will find them . . . but now they are combined only in the All-American Six . . . Then after you've looked, try an All-American . . . See how much \$1045 will really buy.

2-Door Sedan, \$1045; Landau Coupe, \$1045; Sport Roadster, \$1075; Phaeton, \$1075; 4-Door Sedan, \$1145; Cabriolet, \$1155; Landau Sedan, \$1265. New Series Pontiac Six, \$745 to \$875. All prices at factory. Delivered prices include minimum handling charges. Easy to pay on the General Motors Time Payment Plan.

OAKLAND MOTOR CAR COMPANY, PONTIAC, MICHIGAN

OAKLAND ALL-AMERICAN SIX

PRODUCT OF  GENERAL MOTORS