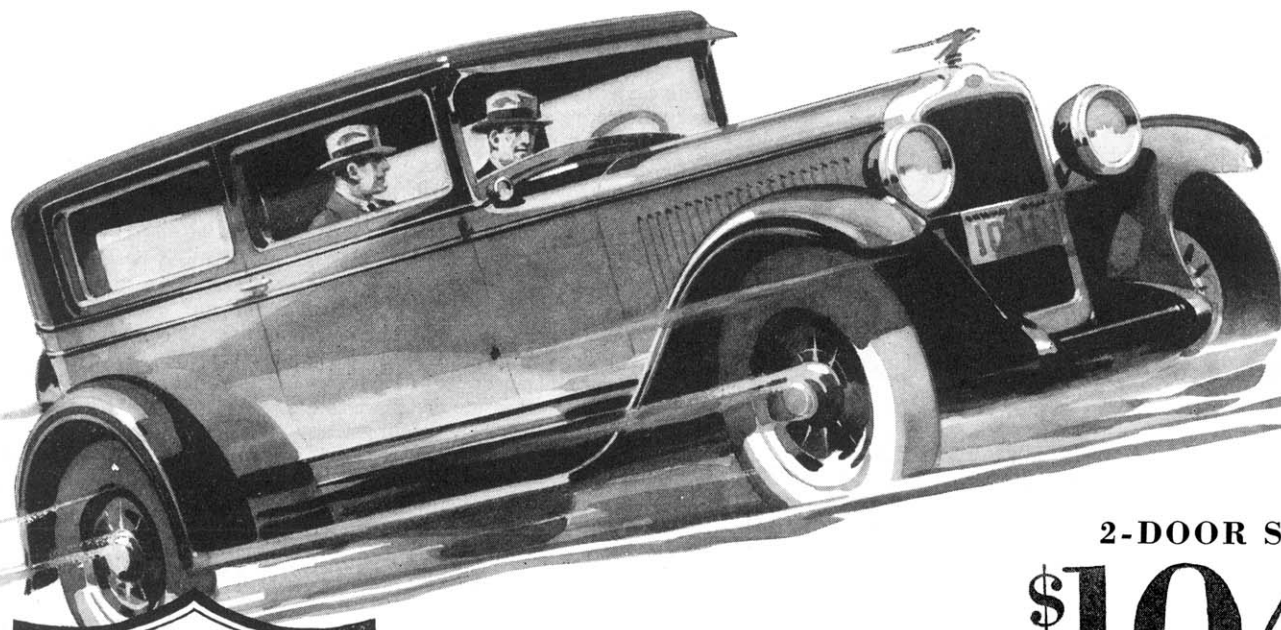




Powered by a Brute of an Engine All-American in Design



Body by Fisher

- Landau Coupe - \$1045
 - Sport Roadster - \$1075
 - 4-Door Sedan - \$1145
 - Cabriolet - - - \$1155
 - Landau Sedan - \$1265
- New Series Pontiac Six, \$745 to \$875. All prices at factory. Delivered prices include minimum handling charges. Easy to pay on the General Motors Time Payment Plan.*

What a power plant! What a clean, uncluttered example of advanced engineering design! That's what you think when you lift the hood of the All-American Six. That's why this brilliant car is amazing everyone who takes the wheel for a drive. ★ ★ ★

A brute of an engine, indeed. With a 79 pound crankshaft . . . crankcase and cylinder block of "bridge-truss" design . . . generously large connecting rods and other vital parts. With many other notable advancements . . . G-M-R cylinder head . . . fuel pump . . . full pressure oiling of moving parts.

★ ★ ★

And the same throughout the chassis.

2-DOOR SEDAN

\$1045

Quality construction everywhere. Deep, rigid frame. Big, self-ventilating, self-adjusting clutch. Smooth-shifting transmission. Velvet-action four-wheel brakes. ★ ★ ★

Small wonder it's famous for conquering America's stiffest mountain grades. Small wonder it has never found the road too rough or the pace too trying. ★ ★ ★

Yet for all its wealth of power, it's silent and satin-smooth. And for speed and snap and handling ease . . . just drive it yourself and see!

OAKLAND MOTOR CAR COMPANY, PONTIAC, MICHIGAN

OAKLAND

ALL-AMERICAN SIX

PRODUCT OF  GENERAL MOTORS