

The Statue of Liberty—symbol of the highest American principles, traditions and beliefs.



A Message to Men Who Look Beneath the Hood

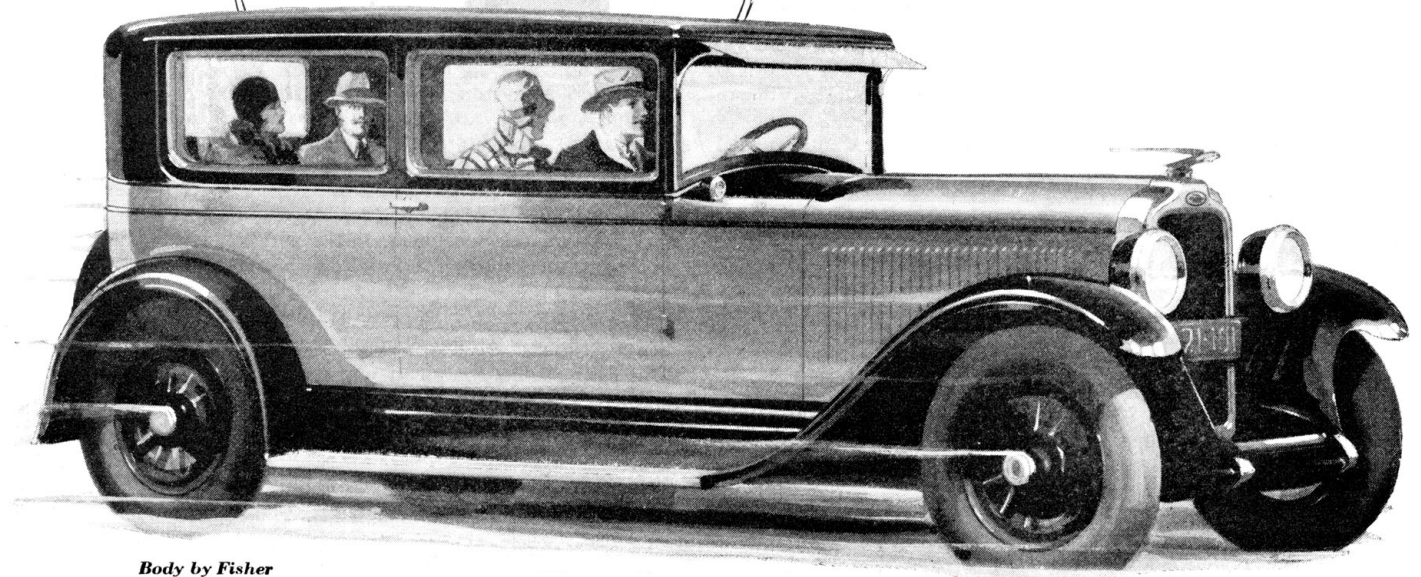
You men who think of automobiles in terms of piston displacement . . . of alloy steel . . . power curves . . . precision construction . . . and engineering design. Forget, for a moment, the beauty of the Fisher-built bodies on the All-American Six—and look beneath the hood. A marvelous sight will greet your eyes.

★ ★ ★

You'll see a big rugged brute of an engine with its G-M-R cylinder head . . . clean, simple, obviously powerful and staunch. You'll see vivid examples of advanced engineering . . . a fuel pump instead of the vacuum system . . . crankcase ventilation . . . thermostatic control . . . air cleaner . . . oil filter . . . manifold design that helps to provide such easy winter starting . . . additional features by the score.

★ ★ ★

And from this inspection you'll guess the truth



Body by Fisher

OAKLAND ALL-AMERICAN SIX

2-DOOR SEDAN

\$1045

Landau Coupe . . .	\$1045	4-Door Sedan . . .	\$1145
Sport Roadster . .	\$1075	Cabriolet . . .	\$1155

Landau Sedan . . . \$1265

New Series Pontiac Six, \$745 to \$875. All prices at factory. Delivered prices include minimum handling charges. Easy to pay on the liberal General Motors Time Payment Plan.

about the rest of the car. That the principles of All-American design provide such units as a big, self-adjusting, self-ventilating clutch . . . a smooth-shifting transmission . . . a deep, strong, exceptionally rigid frame. That its performance is velvet-smooth and silent . . . and thrilling with its snap and speed.

★ ★ ★

If you have a mechanical turn of mind you'll admire the Oakland All-American Six for the engineering genius it reflects. If you're interested only in results, you'll be delighted when you take the wheel yourself . . . *and drive!*

Special Sport Equipment

Available on all body types: six wire wheels with tires . . . special front fenders with tire wells . . . two special tire locks and locking rings . . . collapsible trunk rack . . . \$100 extra on open cars . . . \$110 on closed cars . . . six disc wheels with same equipment, \$75 on open cars . . . \$85 on closed models.

OAKLAND MOTOR CAR COMPANY, PONTIAC, MICH.