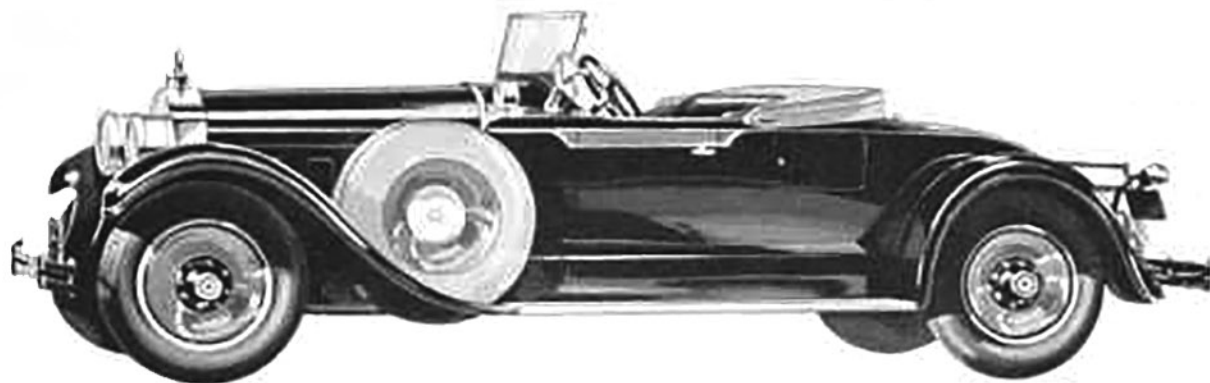




The skill of the medieval swordsmith was an heritage from generations at the forge



PACKARD crankshafts, gears, axles—and all of the many forgings so vital in upholding the Packard reputation for performance and long life—are fashioned with supreme skill and the most modern of precision equipment.

Batteries of huge drop forges, with their costly dies, shape selected steels into Packard parts with a speed and exactness unknown to the craft but yesterday. For while the forging of metal is as old as

history, only with the perfection of modern tools—in which Packard has long held leadership—has drop forging reached its highest development.

Every Packard part must conform to Packard's inflexible standards. Fine materials, fine craftsmen, fine tools—these are factors which for nearly thirty years have made the Packard the favored car of the world's first families.

Packard cars are now priced from \$2295 to \$4995. Individual custom models from \$1875 to \$5925. at Detroit

P A C K A R D
A S K T H E M A N W H O O W N S O N E