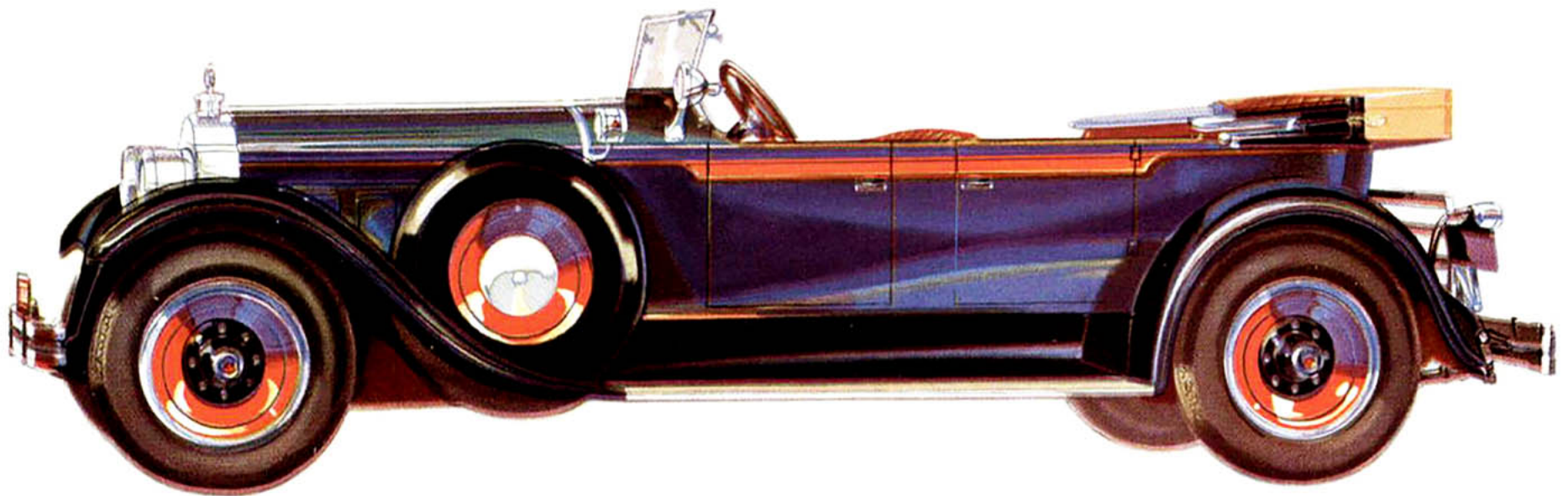


*A colt from a long line of blue-blooded thoroughbreds, expert attention, careful conditioning—then the private test to prove its expected speed and stamina*



**E**ACH succeeding model in the long line of famous Packards has been a little nearer to that perfect combination of fine car qualities which is the Packard goal.

For Packard, in thirty years, has slowly learned how to achieve beauty of line without loss of roominess and comfort, how to provide abundant power without excess bulk and weight, how to give long life and economical operation combined with unsurpassed performance.

And on a million-dollar proving ground pro-

viding every possible facility, Packard still constantly studies new developments which mean continued leadership, and tests the stamina and performance of Packard cars—under conditions far more severe than they will ever be called upon to meet in service.

The Packard proving ground and test track are the final practical laboratory where the Packard Six and the Packard Eight must constantly prove before a staff of technical critics their fitness to go forth bearing the family name.

*Packard cars are priced from \$2275 to \$4550. Individual custom models from \$3875 to \$8725, at Detroit*

**P A C K A R D**  
A S K   T H E   M A N   W H O   O W N S   O N E