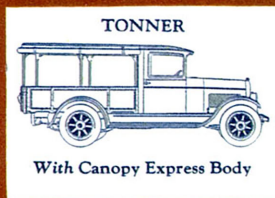
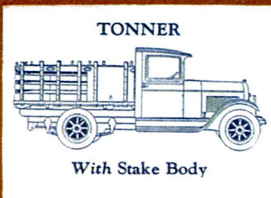
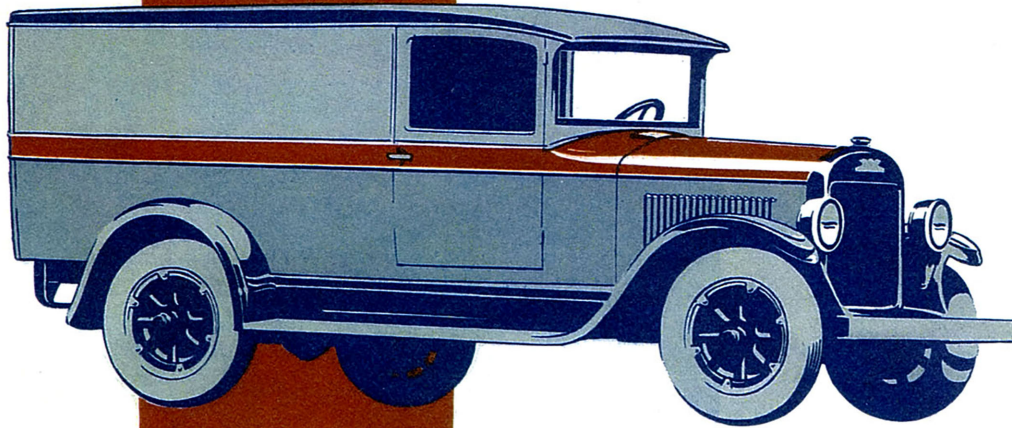


93% of all hauling can be done in Speed Wagons



That 1-ton loads may
ride more swiftly
and more cheaply

GEARED to the gaits of modern passenger car traffic—that's the new TONNER, the most recent addition to the Speed Wagon line.

For the TONNER is a Six—like all the other Speed Wagons—and it is equipped with 4-wheel brakes, that its trips may be quicker and safer whether the route lies across a county or through the thickest of downtown congestion.

Reo has built this Speed Wagon TONNER to help merchants meet the new competition and the new conditions of traffic and of distribution, to aid them in energizing and vitalizing their businesses in that all-important matter of contact with customers, to assure "impressional deliveries."

Try a TONNER yourself—or ask your best driver to put the TONNER through its paces. There is one waiting for you at your Reo dealer's. See the complete Speed Wagon line with a range of capacities from 1000 pounds to three tons, and a variety of wheelbases.

REO MOTOR CAR COMPANY, Lansing, Michigan

6
Cylinders
4
Wheel Brakes

Coupe Comfort
Irreversible steering gear
Single plate clutch
Automatic chassis lubrication
(Myers Patent)
Fully equipped throughout

The TONNER

SPEED WAGON

for faster, surer, easier, cheaper hauling