

Performance That Thrills..

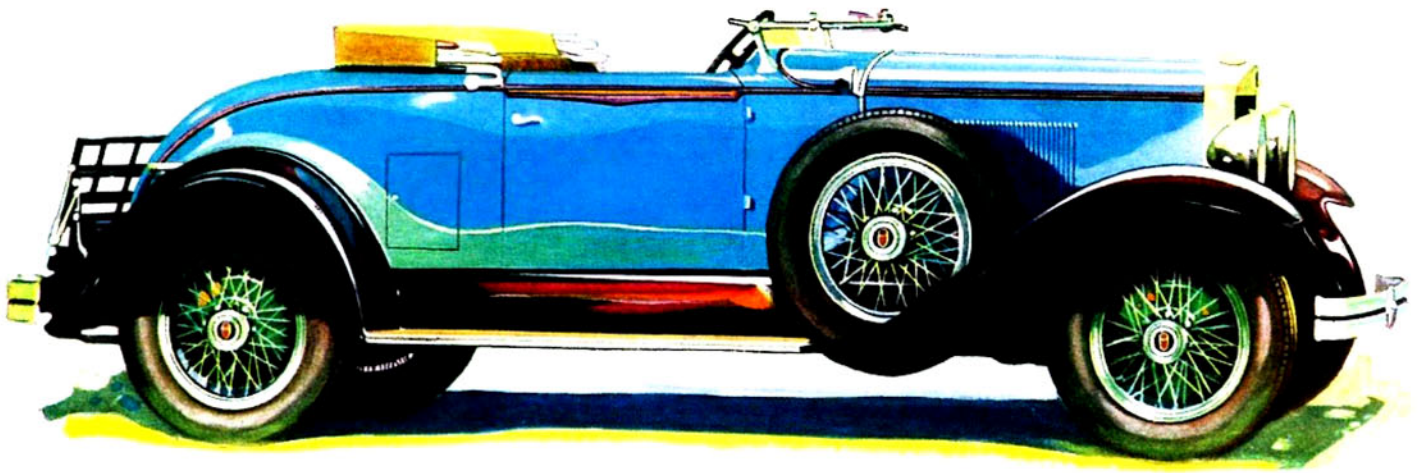
(Four Speeds Forward)
(Standard Gear Shift)

THE new Graham-Paige sixes and eights, distinguished by their beauty and comfort, possess also the thrilling performance of *four speeds forward* (two high speeds with *standard* gear shift). *Fourth*, used most of the time, reveals a new smoothness and swiftness; *third*, a quiet internal gear, gives rapid acceleration in traffic and up steep hills. You are invited to drive—for only personal experience can give you an adequate appreciation of this *time-proved* four speed performance.



Five chassis—sixes and eights—prices ranging from \$885 to \$2495. Car illustrated is Model 615, six cylinder Roadster with rumble seat, \$1195 (special equipment extra). All prices at factory.

Joseph B. Graham
Robert C. Graham
Ray A. Graham



GRAHAM-PAIGE