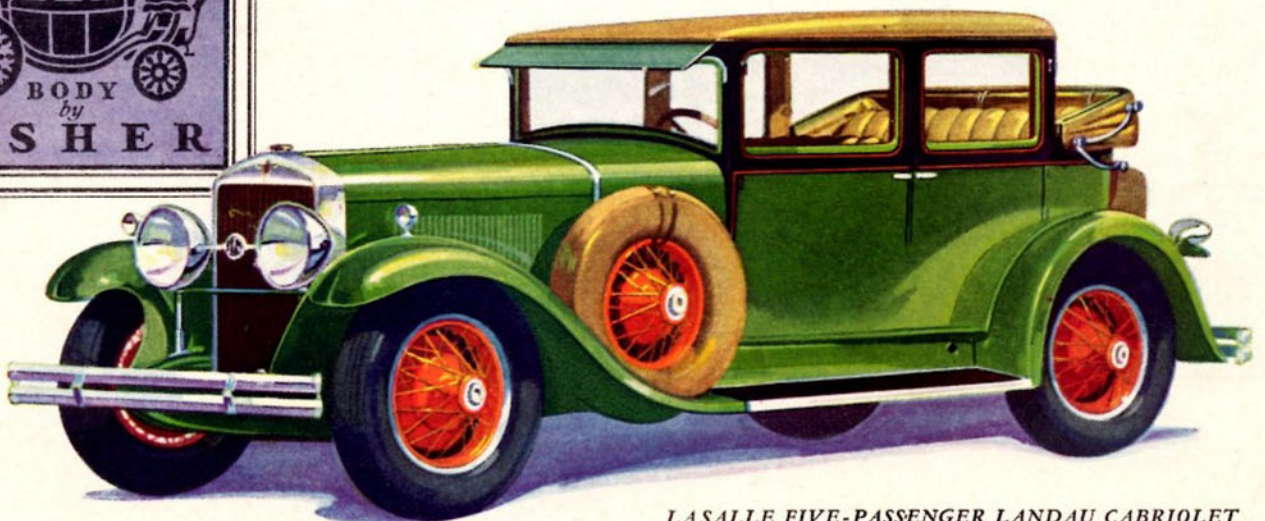
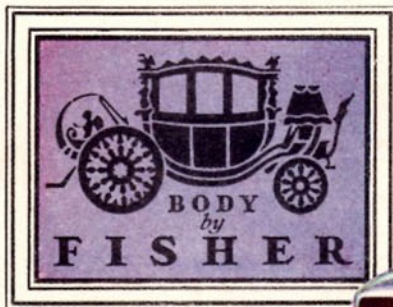




NEVER has the leadership of Fisher and Fleetwood been more brilliantly exemplified than in the exquisite closed bodies on the new Cadillac and La Salle chassis. The smart, distinctive Cadillac-La Salle body designs, that have created a national vogue in motor car style, have been carried to new heights of refinement and beauty. At the same time, the notable ability of Fisher to engineer unprecedented roominess and comfort into a motor car body is here more strikingly apparent than ever before.

G E N E R A L M O T O R S



LASALLE FIVE-PASSENGER LANDAU CABRIOLET