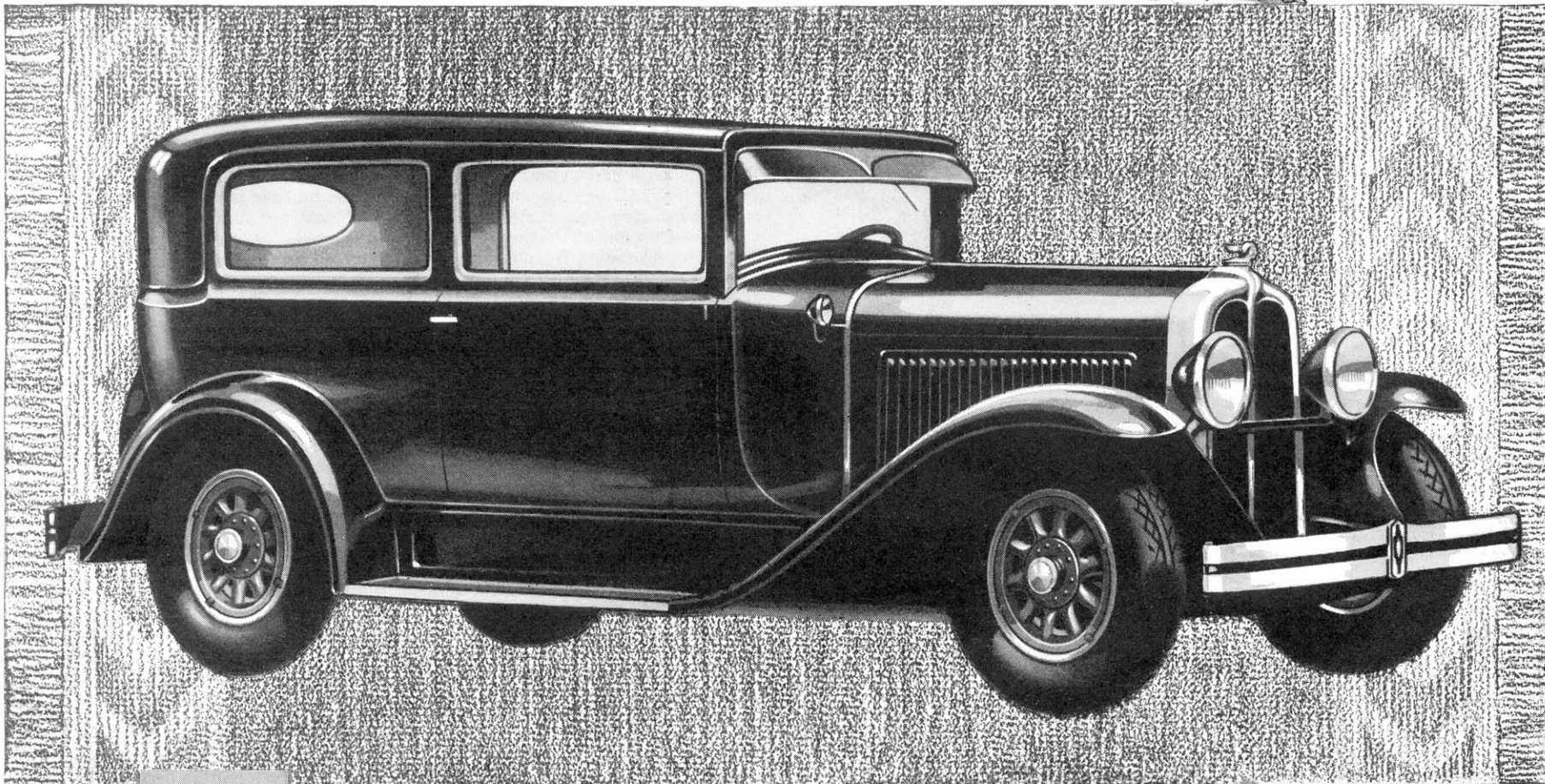
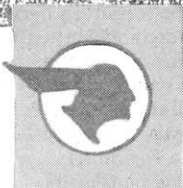


# It fulfills completely the motoring needs of the modern farm family



The 2-Door Sedan, \$745 Body by Fisher



Any farmer with his knowledge of mechanical devices can tell at a glance that the New Pontiac Big Six is the kind of car that's not afraid of work.

But when you own one and live with it day after day—when you actually experience its wonderful performance right out on the farm—that's when you really begin to know how truly new and different it is—how marvelously well adapted to the motoring requirements of the modern farm family.

Its new, larger, more powerful L-head engine assures you the same big car dependability all the year 'round—for the emergency trip to town on a mid-winter night as well as for the leisurely pleasure jaunt of a fragrant June evening. Its Bodies by Fisher—luxuriously appointed—deeply upholstered with durable materials—have the big car comfort and roominess that mean so much to the women of the family. Its four-wheel brakes are designed for all-weather operation—completely enclosed against rain, mud and ice—noiseless and efficient—a fine, big car safety feature that every farmer appreciates.

There's no end of motoring satisfaction awaiting you in the New Pontiac Big Six. Ask the nearest Oakland-Pontiac dealer for a demonstration. Let him tell you about its other big car qualities. Learn from him how conveniently it enables you to *step up* in motor car quality without leaving the low-priced field.

The New Pontiac Big Six, \$745 to \$895, f. o. b. Pontiac, Michigan, plus delivery charges.

OAKLAND MOTOR CAR COMPANY, PONTIAC, MICHIGAN



Consider the delivered price as well as the list price when comparing automobile values . . . Oakland-Pontiac delivered prices include only reasonable charges for delivery and financing.

The New PONTIAC BIG SIX  
PRODUCT OF \$745 2-DOOR SEDAN GENERAL MOTORS