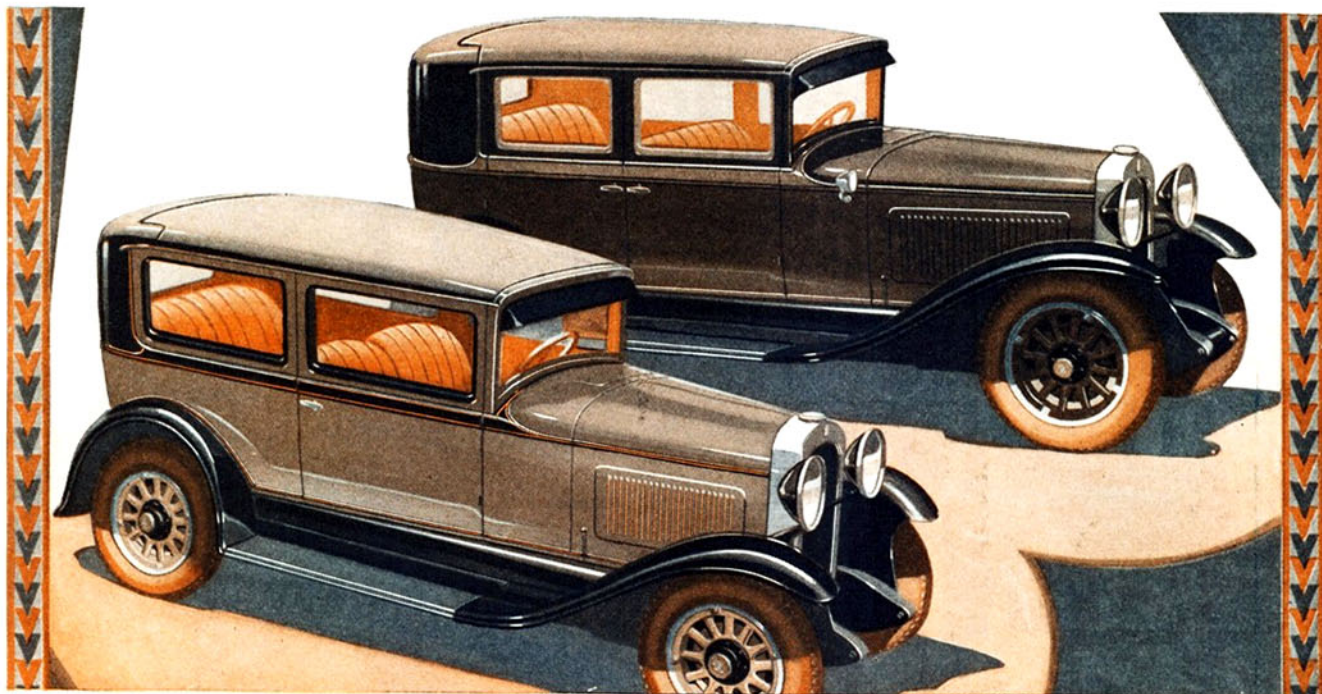


ANNOUNCING THE NEW SUPERIOR WHIPPET

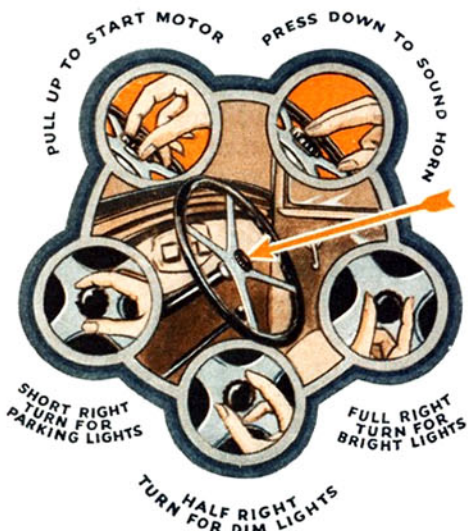
THE STYLE CREATION OF MASTER DESIGNERS
Greater Beauty · Longer Wheelbase · Larger Bodies



INTRODUCING THE NEW

“FINGER-TIP CONTROL”

THE MOST NOTABLE ADVANCE IN DRIVING CONVENIENCE SINCE THE SELF-STARTER



IN modish design, the new Superior Whippet is as far ahead as the first Whippet was ahead in engineering advantages. With longer bodies, higher radiator and hood, low graceful lines, one-piece full crown fenders, mechanical 4-wheel brakes, rich, harmonious colors—the new Superior Whippet establishes an ultra-modern style trend for Fours and light Sixes.

The Superior Whippet is the first car to offer the “Finger-Tip Control”; a single button, conveniently located in the center of the steering wheel, controls the starter, the lights and the horn. Illustrations at the left clearly explain its operation.

Mechanical Improvements

The Superior Whippet's higher compression engine gives more than 20% added horsepower, with resultant increase in power, speed and flexibility. Higher second gear speed gives faster pick-up. Low consumption of gas and oil, results in marked operating economy. An immediate order will aid in early delivery.

Larger, Roomier Bodies

More spacious interiors, with 3 inches added leg room, together with longer springs both front and rear, and form-fitting seats, insure maximum riding and driving comfort.

Whippet Four Coach \$535; Coupe \$535; Sedan \$595; Roadster \$485; Touring \$475; Commercial Chassis \$365. Whippet Six Coach \$695; Coupe \$695; Coupe (with rumble seat) \$725; Sedan \$760; Sport DeLuxe Roadster \$850 (including rumble seat and extras). All Willys-Overland prices f. o. b. Toledo, Ohio, and specifications subject to change without notice.

WILLYS-OVERLAND, INC., TOLEDO, OHIO
 WILLYS-OVERLAND SALES CO., LTD., TORONTO, CANADA