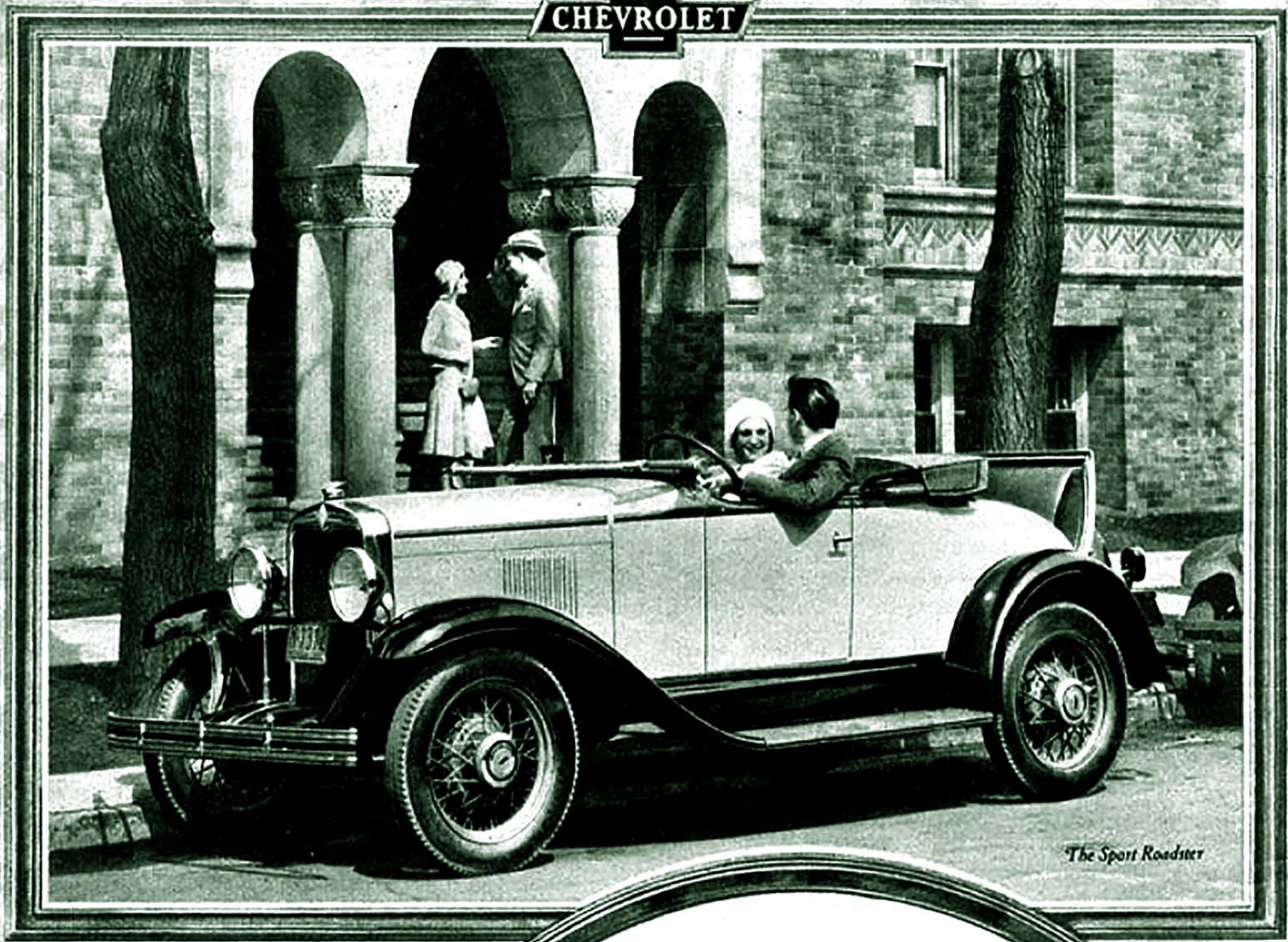


CHEVROLET CHEVROLET CHEVROLET for Economical Transportation CHEVROLET CHEVROLET CHEVROLET
 ...IT'S WISE TO CHOOSE A SIX



The Sport Roadster

It's wise
 to choose a SIX
 and the Chevrolet Six is
 priced as low as \$495

To make sure of greater all-round satisfaction in your next low-priced automobile, choose a Chevrolet Six! For a Six is always smooth! There is no annoying vibration—no feeling of tension or strain. Idling . . . accelerating . . . running at top speed—the power flows quietly and easily. As a result, the whole car lasts longer—and costs less to maintain! Today, those who can afford any automobile can enjoy the many advantages of six-cylinder performance. For the new Chevrolet, with its marvelous six-cylinder motor and its scores of modern engineering advancements, is priced as low as \$495 at the Flint factory. It is as economical to operate as any car you can buy—and it can be purchased with a small down payment and easy terms.

CHEVROLET MOTOR COMPANY, DETROIT, MICHIGAN
 Division of General Motors Corporation

The Roadster.....	\$495
The Phaeton.....	\$495
The Sport Roadster.....	\$555
The Coach.....	\$565
The Coupe.....	\$565
The Sport Coupe.....	\$655
The Club Sedan.....	\$625
The Sedan.....	\$675
The Special Sedan.....	\$725
(6 wire wheels standard)	
The Sedan Delivery.....	\$595
Light Delivery Chassis.....	\$365
1½ Ton Chassis.....	\$520
1½ Ton Chassis with Cab.....	\$625
The Roadster Delivery.....	\$440
(Pick-up box extra)	
Prices f. o. b. factory Flint, Michigan	

CHEVROLET SIX