

Announcing the CHEVROLET Roadster Delivery



The
ROADSTER
DELIVERY

\$440

Pick-Up Box
Extra

The 1½
Ton Chassis \$520

The Light De-
livery Chassis \$365

The Sedan
Delivery \$595

The 1½ Ton
Chassis \$625
with Cab

All prices f. o. b. fac-
tory, Flint, Michigan

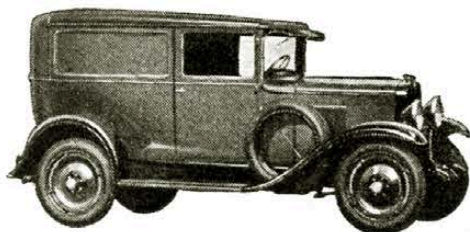
Broadening a line of commercial vehicles that has earned outstanding preference among business men everywhere—Chevrolet now presents a new 6-cylinder Roadster Delivery . . . speedy—sturdy—unusually efficient in every way—yet *priced sensationally low*.

It is powered with an improved 6-cylinder valve-in-head motor that now develops 50 horsepower. It has a stronger rear axle—a heavier transmission—new fully-enclosed, weatherproof 4-wheel brakes and larger balloon tires. And it is available with a wide selection of pick-up boxes.

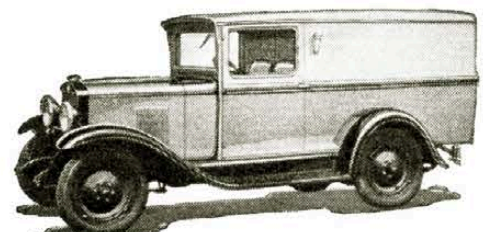
If you are interested in getting maximum efficiency from your light delivery service—at the very minimum in cost—investigate this new *low-priced* Chevrolet Roadster Delivery.

Your Chevrolet dealer has the facts. And a trial load demonstration will provide the proof!

Chevrolet Motor Company, Detroit, Michigan
Division of General Motors Corporation



The Chevrolet Sedan Delivery, adapted from passenger car design, is widely used by specialty shops, department stores, salesmen, etc.



The Chevrolet Light Delivery Chassis is available with a wide variety of smart panel bodies—suitable for almost any delivery need.

