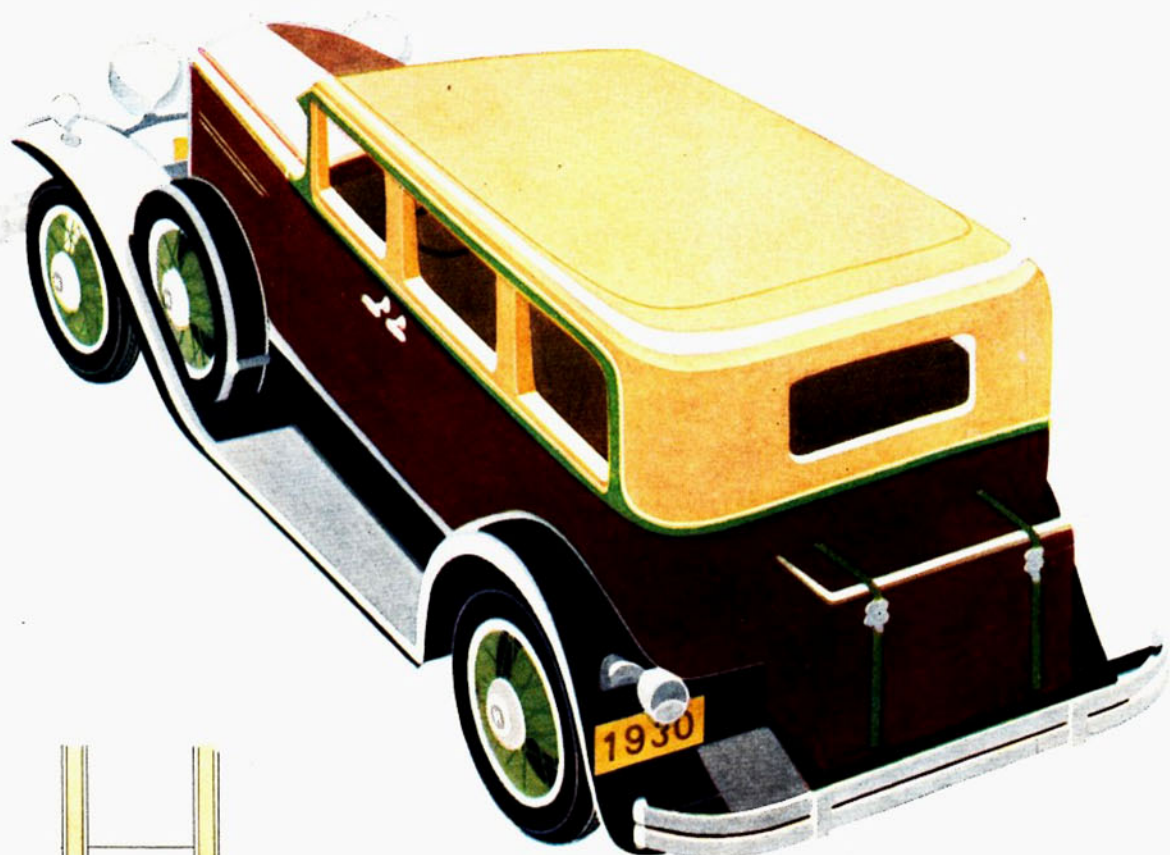


" THE GOAL OF YEARS HAS BEEN ATTAINED "



HUPMOBILE · PRESENTS the · *greatest* · Six · in · its · History

The temptation to build a car for the vast "thousand-dollar" market comes insistently to nearly every motor car maker. It has been coming to Hupmobile for years. But Hupmobile has steadfastly refused, pending the time when it could build, not just another automobile, but a GREATER Hupmobile, irrespective of a lowered price . . . Today, this goal of years has been attained to the fullest, in the superb new 1930 Hupmobile Six. *This car is a Hupmobile, 100%.* Powered by the selfsame motor that made the Hupmobile Century Six the greatest success in Hupmobile history. Built in every detail to Hupmobile precision standards . . . But it is a handsomer, faster, and smarter Hupmobile. Stepped up from 57 to

AT \$1060
ALL PRICES
F. O. B. FACTORY
5-PASSENGER 4-DOOR SEDAN . . . \$1060
CONVERTIBLE CABRIOLET . . . \$1075
COUPE \$995

70 horsepower. Made smoother by the counterweighting of the famous Hupmobile crankshaft, and by rubber-cushioned engine mountings. Made more comfortable by more seat and leg room, and by many engineering refinements, adding speed, safety and ease of driving . . . Now Hupmobile's long renown as "The Car of the American Family" gains new emphasis . . . 25% more power . . . Yet priced at 25% less than its illustrious predecessors!

HIGHLIGHTS OF THE NEW 1930 HUPMOBILE SIX

70 miles per hour . . . 70 horsepower. Acceleration from 5 to 25 miles per hour in 7 seconds; 5 to 50 m. p. h. in 20 seconds . . . The famous Hupmobile Century Six engine improved with counterweighted crankshaft and rubber-cushioned engine mountings; minimum vibration at any speed . . . Improved 4-wheel Hupmobile steeldraulic brakes . . . Long springs of matched tensions, with improved hydraulic shock absorbers, not subject to temperature variations . . . Foot operated dimmer control . . . Non-glare slanting windshield, full ventilating type . . . A big car, 50½ inches across rear seat, 49 inches across front seat . . . Unusually generous head room . . . Further advancement of Hupmobile's introduction of tailored sheet metal concealing chassis attachments . . . Sweeping fenders of the new French type . . . New 6-inch chromium hub caps with concealed hub bolt . . . New front fender parking lights of same design as headlights. Custom equipment—6 wire or disc wheels, two spare side-mounted in fender wells . . . available at slight extra cost.