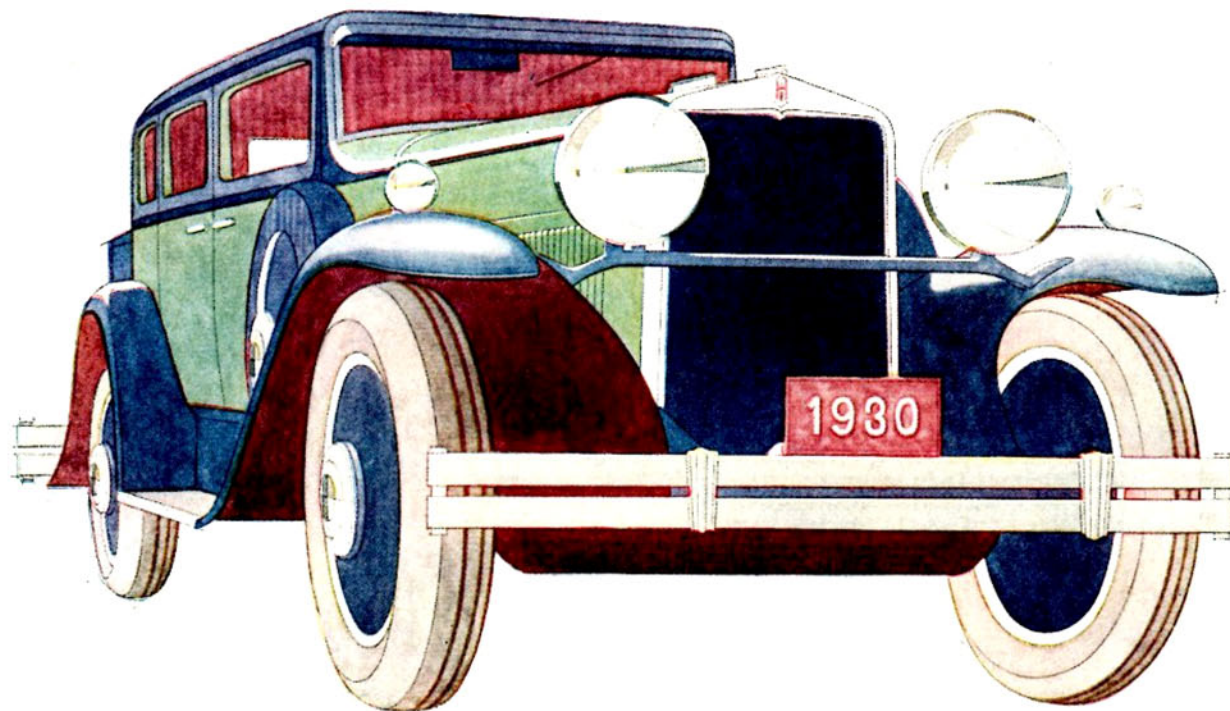


"THE GOAL OF YEARS HAS BEEN ATTAINED"



THE · 1930 · HUPMOBILE · SIX

PRICED WITHIN THE THOUSAND DOLLAR FIELD

It has long been the ambition of Hupp engineers to build a Hupmobile at a price within the thousand dollar class . . . But each year they have said: "Let's wait a while. Let's wait until we can build, not just another automobile, but a greater Hupmobile. A car that will add new lustre to Hupmobile's 21-year prestige" . . . Today, this goal of years has been attained—in the new 1930 Hupmobile Six . . . It is a car which Hupp is proud to call a Hupmobile because it is a Hupmobile in every detail of its design and construction . . . It is powered by the selfsame Hupmobile motor which made the Hupmobile Century Six the most spectacular success in Hupmobile history . . . *It is 100% a Hupmobile*—but a more powerful Hupmobile, with its time-tested Hupmobile en-

gine made still smoother and sweeter running . . . *It is 100% a Hupmobile*—a handsomer Hupmobile. Made still smarter by further advances in Hupmobile's innovation of tailored sheet metal and by new, lower-swung and dashing lines . . . *It is 100% a Hupmobile*—but a still sweeter riding and driving Hupmobile. Made more comfortable by more seat and leg room and by many engineering refinements, adding to speed, safety, ease of con-

trol and restful traveling . . . Hupmobile's long renown as "The Car of the American Family" gains new emphasis—takes on a new significance today.

HIGHLIGHTS OF THE NEW 1930 HUPMOBILE SIX

70 miles per hour . . . 70 horsepower. Acceleration from 5 to 25 miles per hour in 7 seconds; 5 to 50 m.p.h. in 20 seconds . . . The famous Hupmobile Century Six engine improved with counterweighted crankshaft and rubber-cushioned engine mountings; minimum vibration at any speed . . . Improved 4-wheel Hupmobile Steel-draulic brakes . . . A big car, 50½ inches across rear seat, 49 inches across front seat . . . Unusually generous head room . . . New 6-inch chromium hub caps with concealed hub bolt . . . New front fender parking lights of same design as headlights. Custom equipment—6 wire or disc wheels, two spare side-mounted in fender wells . . . available at slight extra cost.

