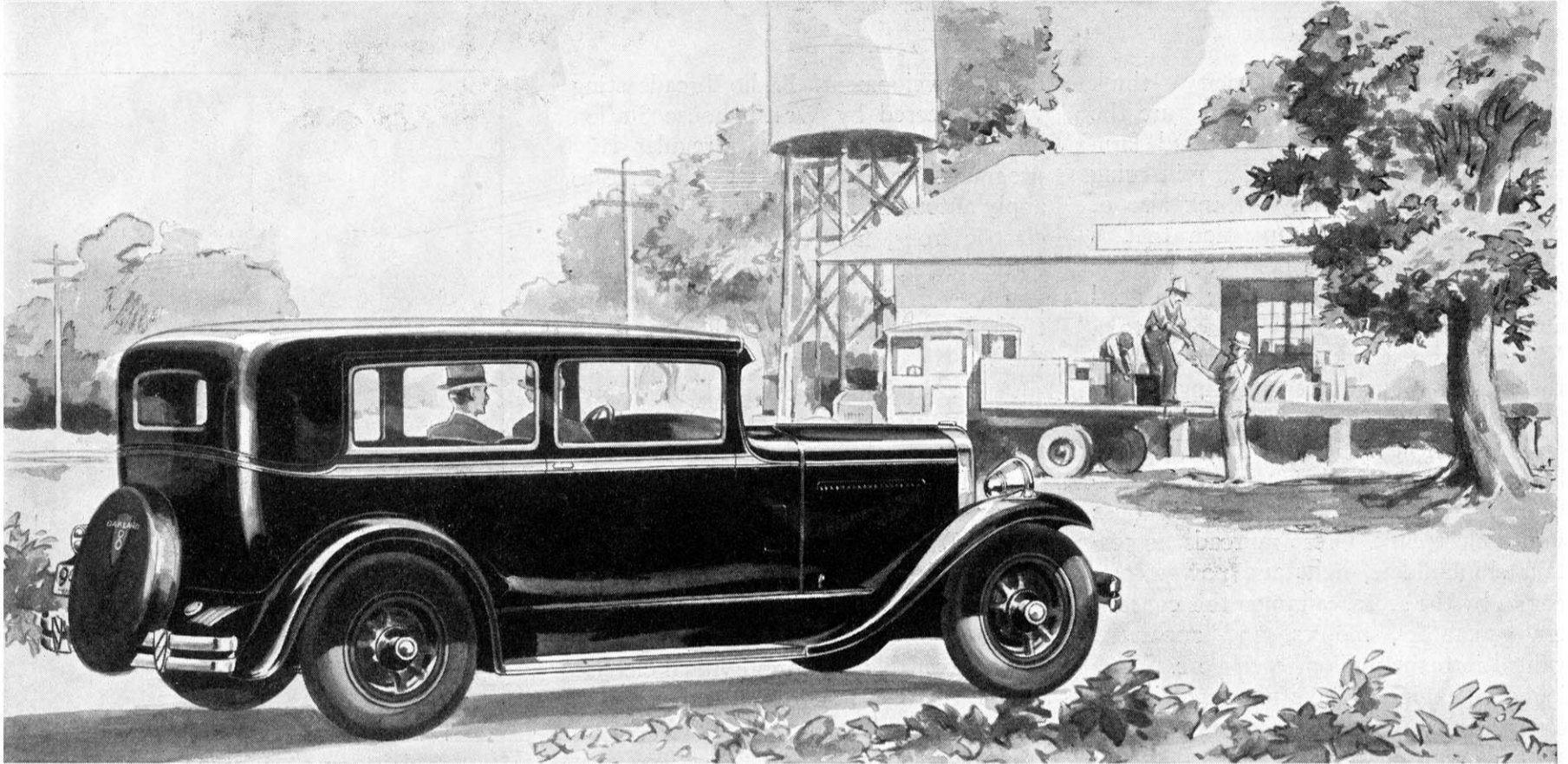


*The  
New***OAKLAND EIGHT**

PRODUCT OF GENERAL MOTORS



*Economy is among the major advantages  
of its 85-horsepower V-type engine*

**\$ 1025**  
AND UP

Seven body types. Closed bodies by Fisher. Prices f. o. b. Pontiac, Mich., plus delivery charges.

**C**ONSIDERATIONS of economy will make New Oakland Eight owners of many farm motorists this season. Low costs of operation and upkeep are among the major advantages of its 85-horsepower V-type engine. With its full down-draft carburetion and manifold system, which promotes efficient fueling, Oakland's mileage per gallon of gasoline is abreast of that of many sixes of similar size and weight.

And its V-type design makes possible the incorporation of many features that lead to savings through longer engine life. One is the new duo-plane cylinder head which assures uniform power impulses. Another is the unusually short, rigid crankshaft which has no vibration period within the speed range of the engine.

Due to the compactness of the power plant, all oil passages are short and direct, and assure an ample supply of oil through its

full pressure lubrication system. Its main bearings are large and durable. It has large water jackets for efficient cooling and its valves are fully accessible for easy adjustment.

Consult your dealer about the superior performance of this lowest-priced V-type eight which develops one horsepower to each 37 pounds of total car weight, a ratio unequalled in a car of its size and weight. Let a demonstration reveal to you its power and speed, its spectacular hill-climbing. These and many additional factors of striking value make the New Oakland Eight exceptionally desirable as a car for the modern farm.

*Remember... you can buy an Oakland on special G. M. A. C. terms offered to farm buyers exclusively, with payments at convenient intervals during the year.*

Consider the delivered price as well as the list (f. o. b.) price when comparing automobile values . . . Oakland-Pontiac delivered prices include only authorized charges for freight and delivery and the charge for any additional accessories or financing desired.

*Write for an interesting booklet which illustrates and describes the design of the New Oakland Eight*

OAKLAND MOTOR CAR COMPANY, PONTIAC, MICHIGAN

*superior  
performance*